

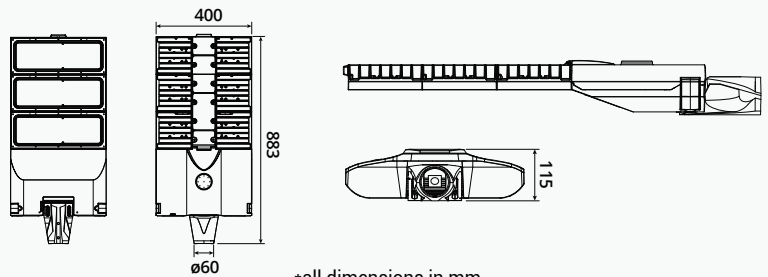


Zora Large ST Series

Technical Specification

FEATURES

Ingress Protection	IP66
Impact Protection	IK09
Input voltage	220V-240V Universal Input
Lumen Maintenance	L90 @ 70,000 hours
Colour Rendering Index (CRI)	>70 - 80
Working Temperature	-25°C - 50°C
Storage Temperature	-25°C - 80°C
Power Factor	>0.95 at Full Load
THD	<20% at Full Load
Lighting Class - Compliance	ME, CE, S, A (Others available on request)



MATERIALS/COMPONENTS

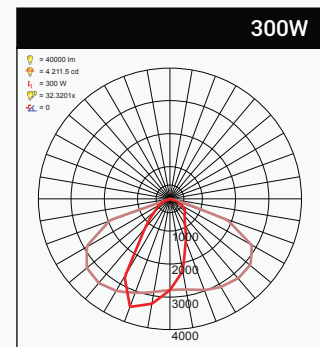
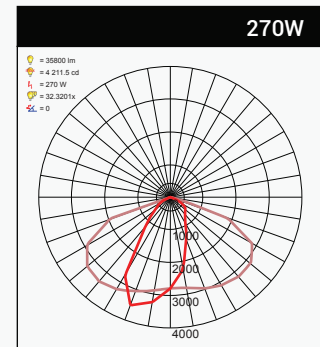
Casing material	Pressure casted Aluminum ADC12, Powder-coated Finishing
Cover	5mm Tempered Glass
Dimming	Support DALI, 1-10V (Optional)
NEMA Socket	Support NEMA, ZIGBEE, LORA Smart Light System (Optional)
Additional Features	High Efficiency LEDs, Anti-Condensation Valve

SPECIFICATION

Model No.	Power	Lamp	Input current	Weight	CCT	Efficacy	Lumen
Zora Large ST270	270W	135 LEDs	1.17A	16.5kg	<3500K	133 lm/w	35,800 lm
					4000K	135 lm/w	36,500 lm
					5000K	138 lm/w	37,300 lm
					6000K	143 lm/w	38,500 lm
Zora Large ST300	300W	135 LEDs	1.30A	16.5kg	<3500K	133 lm/w	40,000 lm
					4000K	135 lm/w	40,500 lm
					5000K	138 lm/w	41,400 lm
					6000K	143 lm/w	42,800 lm

* Flux data based Ta = 25°C
* CCT & Lumen +/-10%

PHOTOMETRIC DATA

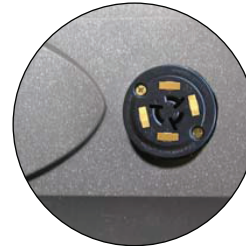


Zora Large ST Series

Technical Specification



Smart control for dimming
NEMA socket : Support NEMA, ZIGBEE,
LORA smart lighting system (optional)



Casing material
pressure casted aluminum ADC12,
powder-coated finishing



High transparency
5mm tempered glass cover

Separated construction
LED module for efficient
heat transfer

Adjustable spigot

LED module
can be 45 to 135 LEDs

