



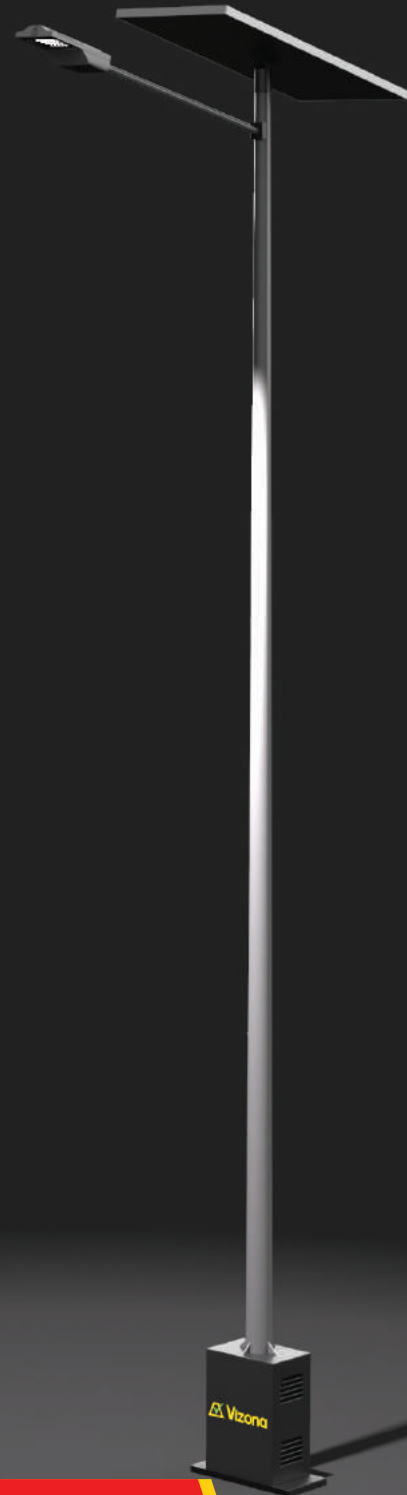
Solar Collection Panel

- Self Sufficient Solar Light
- High Efficiency LED Luminaire
- Premium Bosch Deep Cycle Batteries
- Low Maintenance
- 50,000 + Hour Life Cycle

- Standard Pole heights 6 & 8 metres
- Standard Wattages 35 & 65W



Battery Cabinet

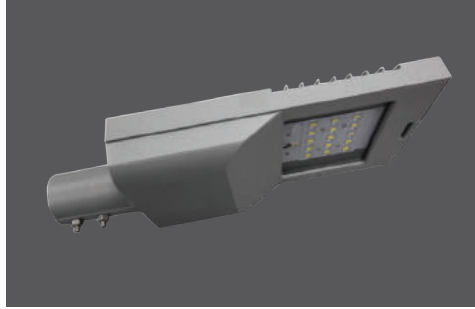


HEAVY - DUTY

6m EcoBeam Solar Pole

HEAVY - DUTY

INDUSTRY LEADING TECHNOLOGY



Solar Light Specifications

LED

Type:	Zora Mini ST Series (High Efficiency)
Watts	35W 16 LEDs 65W 24 LEDs
Lumens	4,480 lm 7,950 lm
CCT	(Colour Temperature) 4000K (standard) / 3500K (optional)
Ingress Protection	IP66
Impact Protection	IK09
Working Temperature	-25°C ~ 50°C
Storage Temperature	-25°C ~ 80°C
Casing material	Pressure Casted Aluminium ADC12
Cover	5mm Tempered Glass
Finish	Powdercoated

Battery

Battery Type	2 x Bosch Deep Cycle 12V 120Ah Sealed GEL
--------------	--

Solar Panel

Wattage	100W
Panel type	Monocrystalline

Unit

Pole	Octagonal Poles. Heavy pressed steel
Heights	6 and 8 metres
Base Cabinet	Steel plate with security fixings
Finish	Hot dip galvanised (standard) powdercoat (option)
Options	Anti-climbing spikes Raised battery cabinet

* Due to continual product improvement all specifications & renderings are subject to change without notification.