

EcoEdge

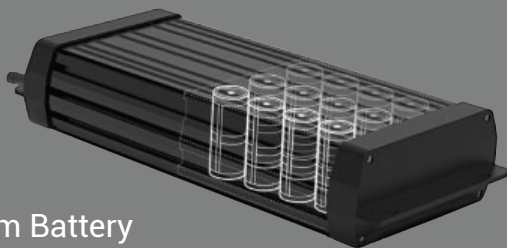
Solar Light



Double Light Head

- Ingress Protection: IP66 (Waterproof)
- Lithium Iron Phosphate LiFePO_4 Battery

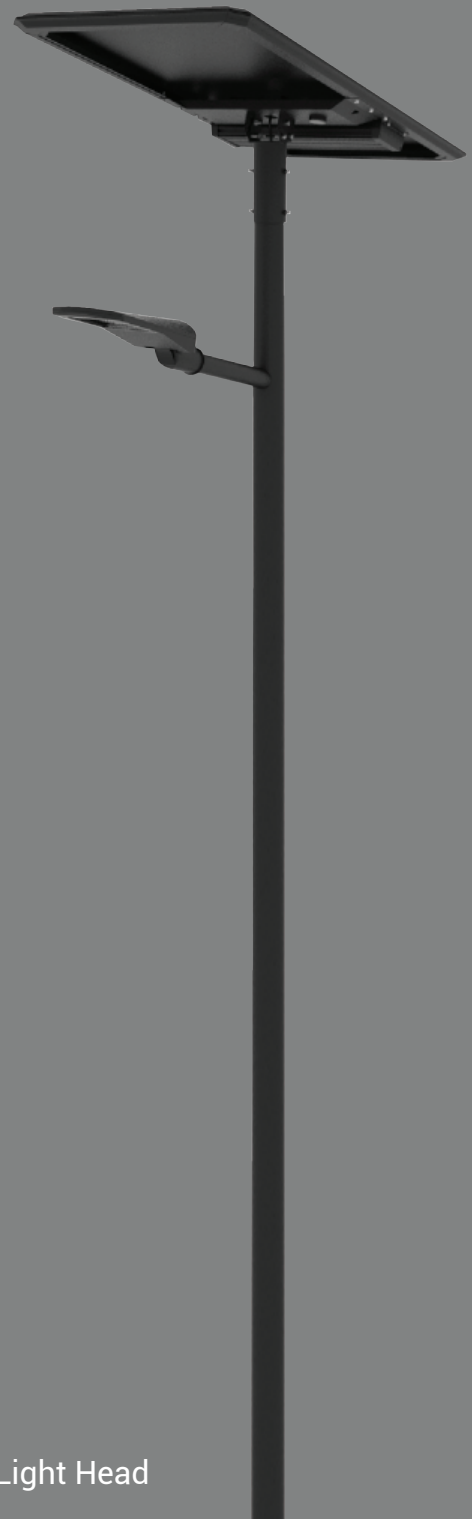
- LED Lifecycle 50,000+ hours
- 3 Year Warranty



Lithium Battery



Controller

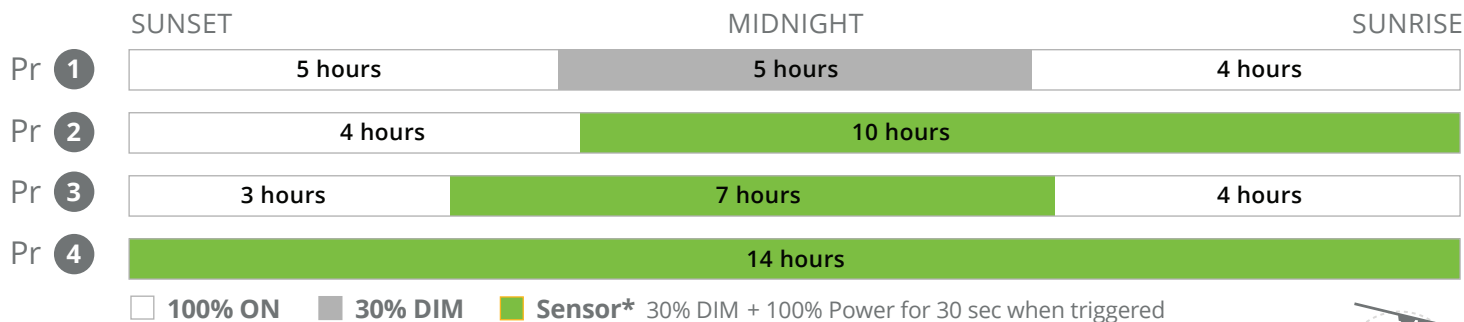


Single Light Head
& Pole



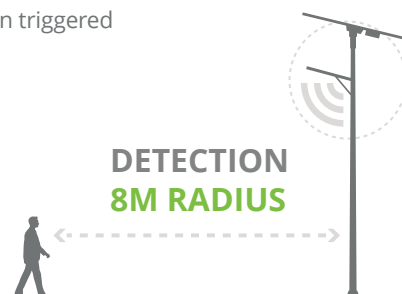
EcoEdge

Solar Light



MICROWAVE MOTION SENSOR

360° coverage, invisible and integrated in luminaire housing. 8m wave radius.



LED	
Type:	EcoEdge
Wattages	30W 40W 50W 60W 80W
Lumens	150lm/W
CCT	3000K to 6000K (Standard 4000K)
Ingress Protection	IP66 & Water-proof
LED Lifecycle	50,000+ hours
Working Temperature	-10°C to 70°C (Optional -40°C to 70°C)
Solar Panel	5 Bus-bars cells Mono-crystalline Solar Panel
Solar Panel Power	285 Watts/ 36Volts
Beam Angle	102.5° 116.7° 147.5°
Battery	LiFePO ₄ - Lithium Iron Phosphate
Battery Capacity	58.5AH / 25.6Volts
CRI	>70
Wind Load Rate	180km/h
Sensor	Microwave 360° Motion Sensor