

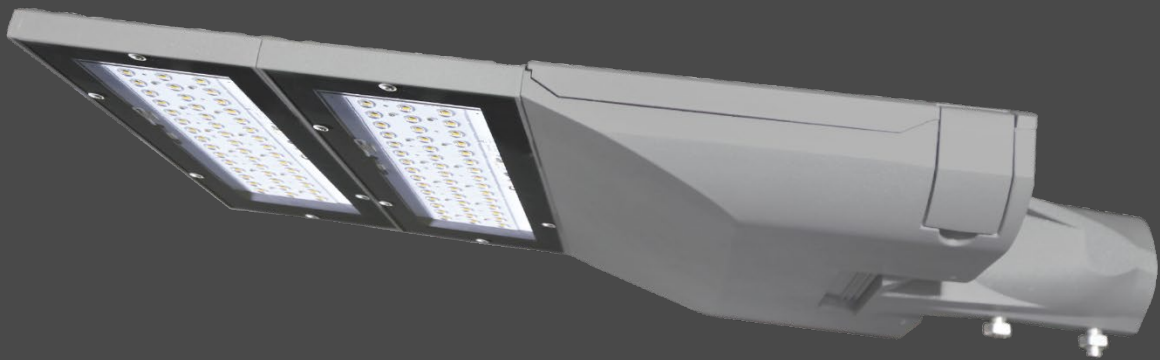


Lighting Design

SAMPLE


Multi-Court Lighting

Zora ST240W (240 Watt)



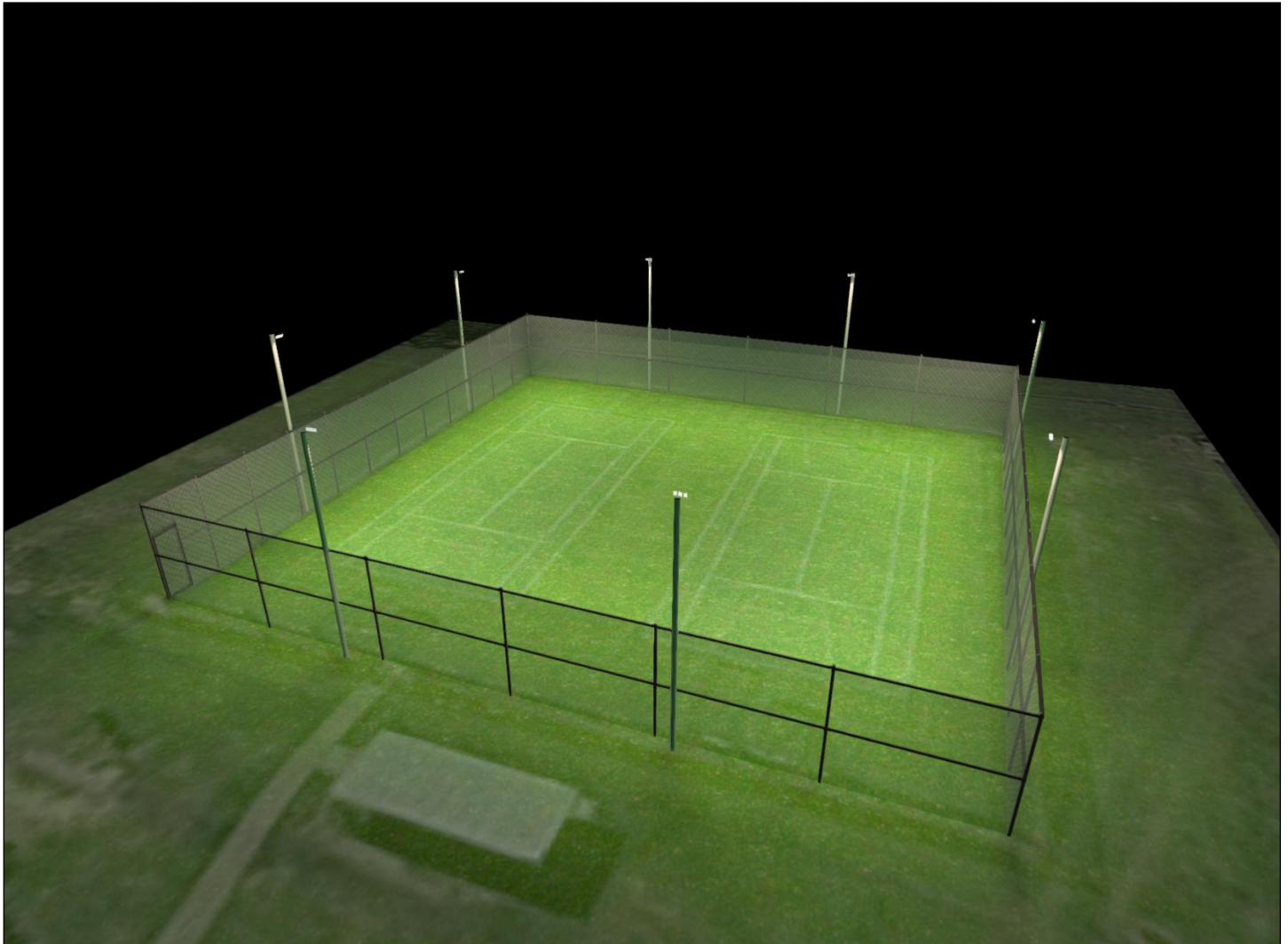
Content

Multipurpose Courts	
Luminaire list.....	3
Views.....	4
Multipurpose Courts	
Luminaire layout plan.....	6
Calculated zone / Perpendicular illuminance.....	8
Calculated zone 2 PPA_1 / Perpendicular illuminance.....	11
Calculated zone 2 PPA_2 / Perpendicular illuminance.....	14

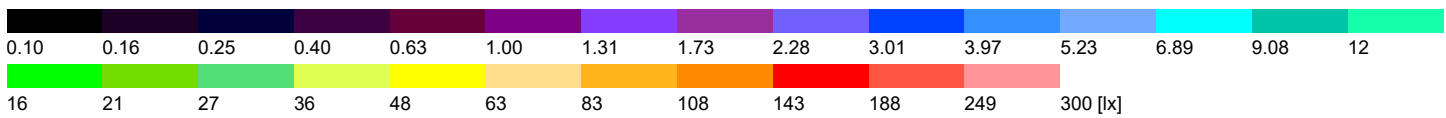
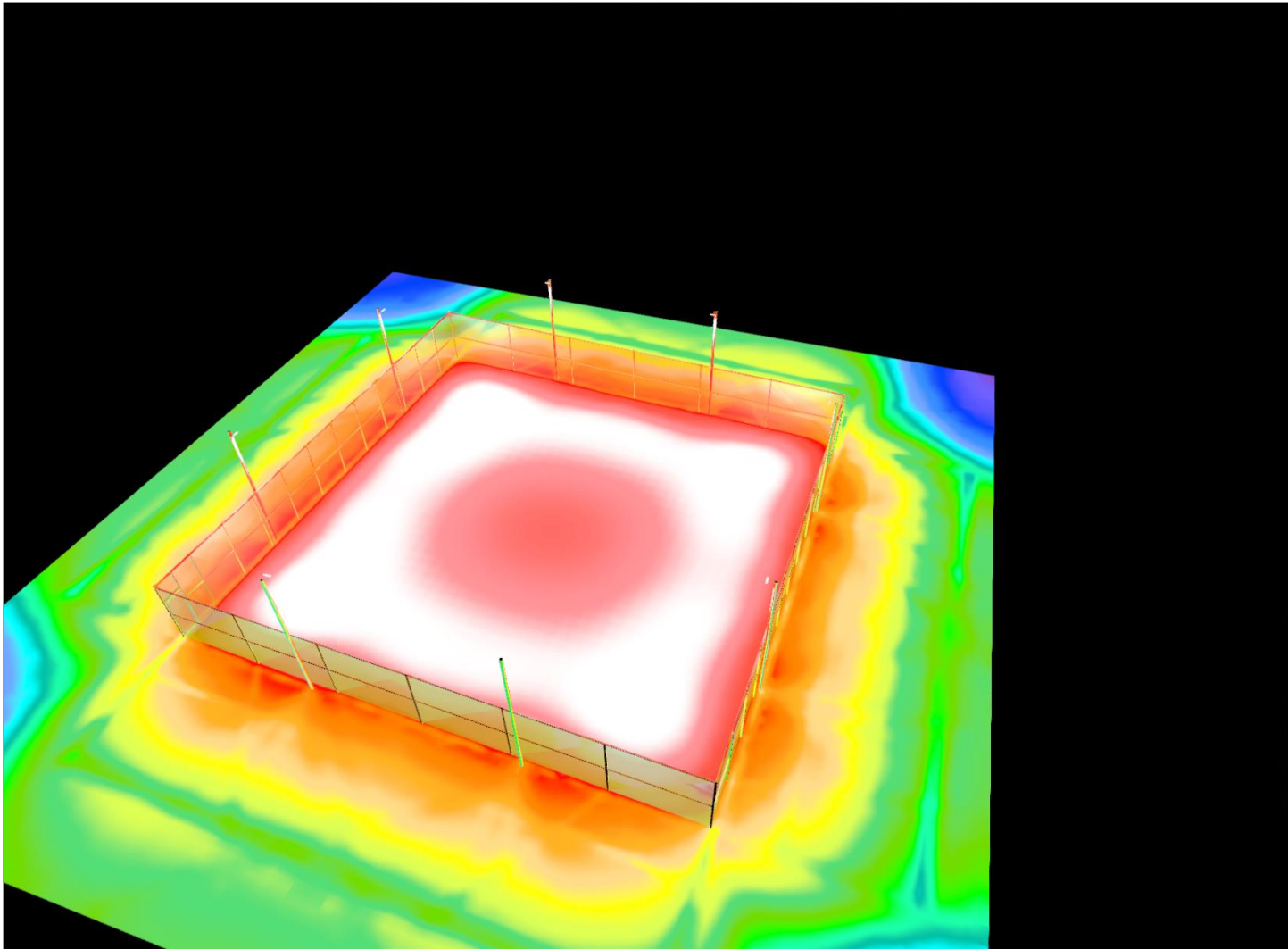
Quantity	Luminaire (Luminous emittance)		
24	Vizona Zora ST240 Luminous emittance 1 Fitting: 1x Light output ratio: 100.00% Lamp luminous flux: 29730 lm Luminaire luminous flux: 29729 lm Power: 242.6 W Luminous efficacy: 122.5 lm/W		

Total lamp luminous flux: 713520 lm, Total luminaire luminous flux: 713496 lm, Total Load: 5822.4 W, Luminous efficacy: 122.5 lm/W

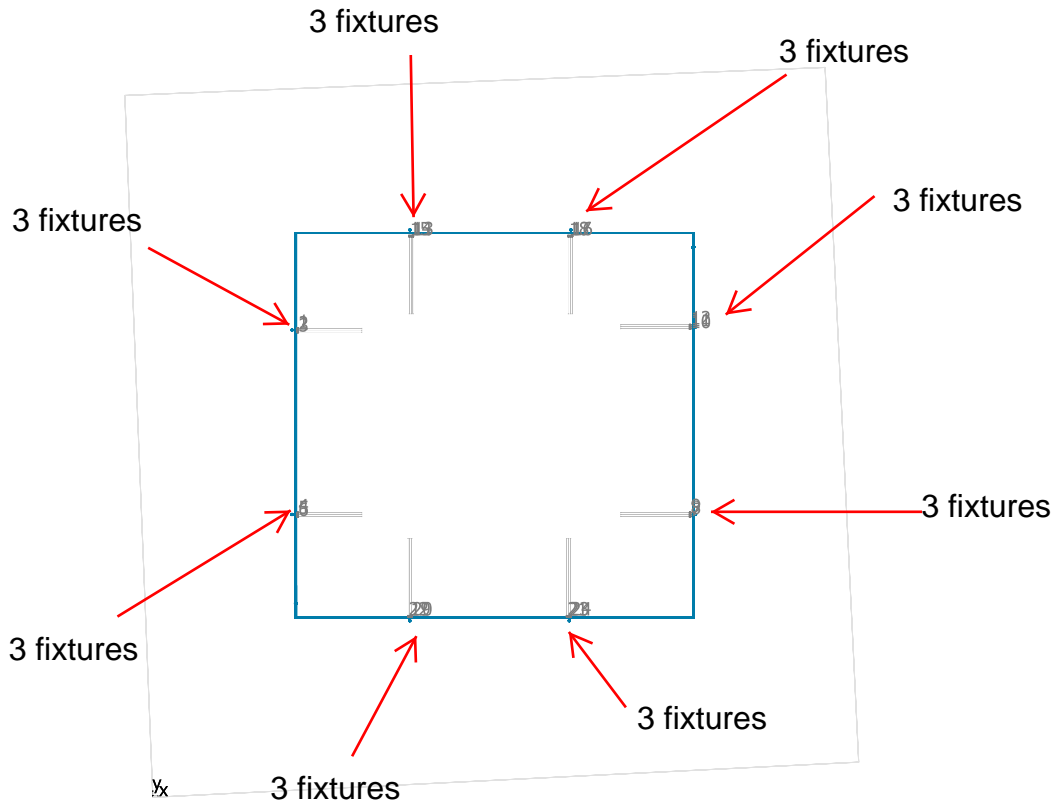
Multipurpose Courts



Multipurpose Courts, Illuminance values in [lx]



Multipurpose Courts

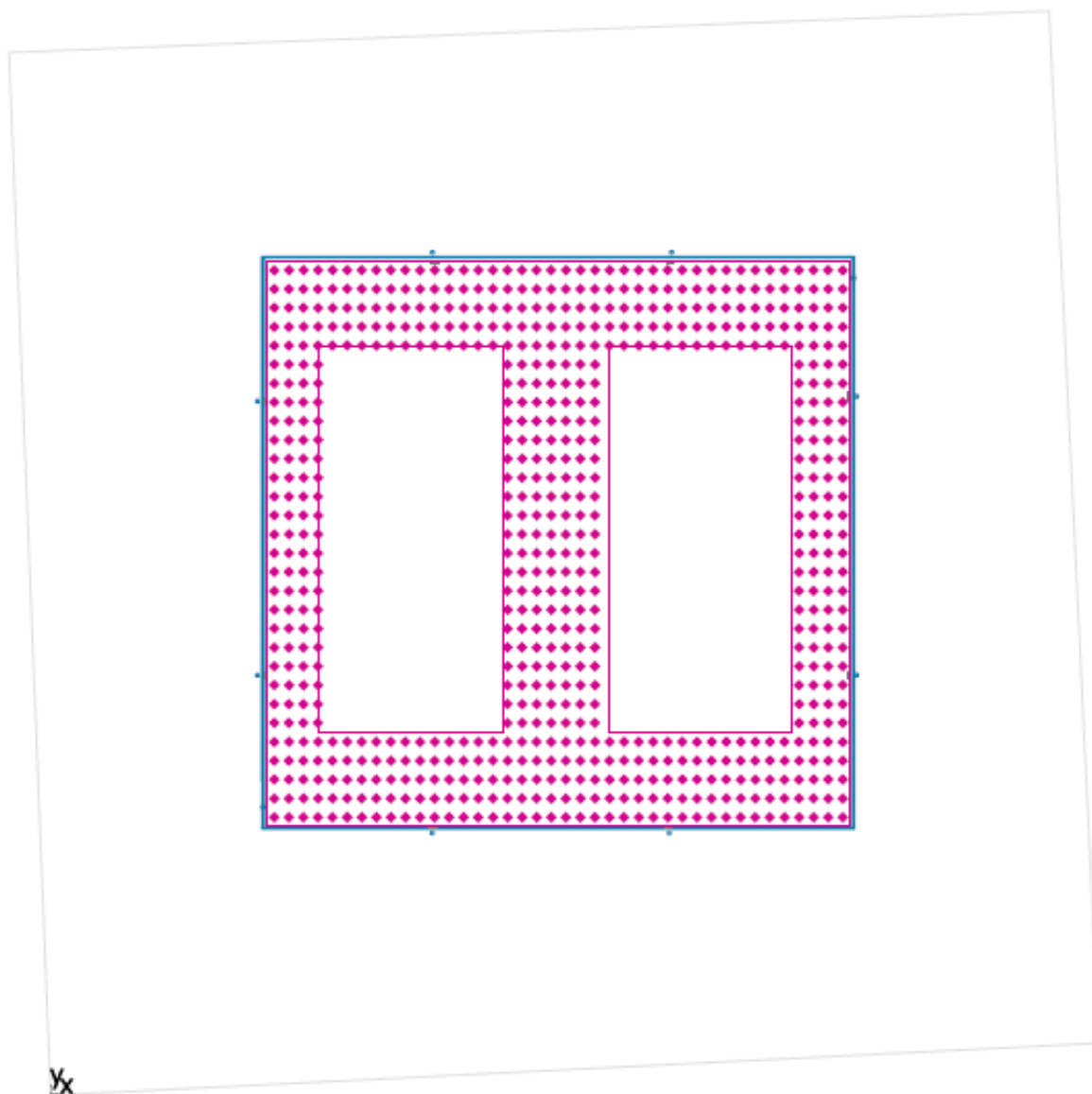


No.	X [m]	Y [m]	Mounting height [m]	Light loss factor
1	12.912	41.707	10.000	0.80
2	12.912	41.546	10.000	0.80
3	12.912	41.375	10.000	0.80
4	12.912	25.251	10.000	0.80
5	12.912	25.091	10.000	0.80
6	12.912	24.920	10.000	0.80
7	47.978	24.929	10.000	0.80
8	47.978	25.089	10.000	0.80
9	47.978	25.260	10.000	0.80
10	47.978	41.687	10.000	0.80
11	47.978	41.847	10.000	0.80
12	47.978	42.018	10.000	0.80
13	23.222	49.979	10.000	0.80
14	23.062	49.979	10.000	0.80
15	22.891	49.979	10.000	0.80
16	37.421	49.979	10.000	0.80
17	37.261	49.979	10.000	0.80
18	37.090	49.979	10.000	0.80
19	22.943	15.992	10.000	0.80
20	23.113	15.992	10.000	0.80
21	36.959	15.992	10.000	0.80
22	22.782	15.992	10.000	0.80



No.	X [m]	Y [m]	Mounting height [m]	Light loss factor
23	37.120	15.992	10.000	0.80
24	37.291	15.992	10.000	0.80

Calculated zone / Perpendicular illuminance



Light loss factor: 0.80

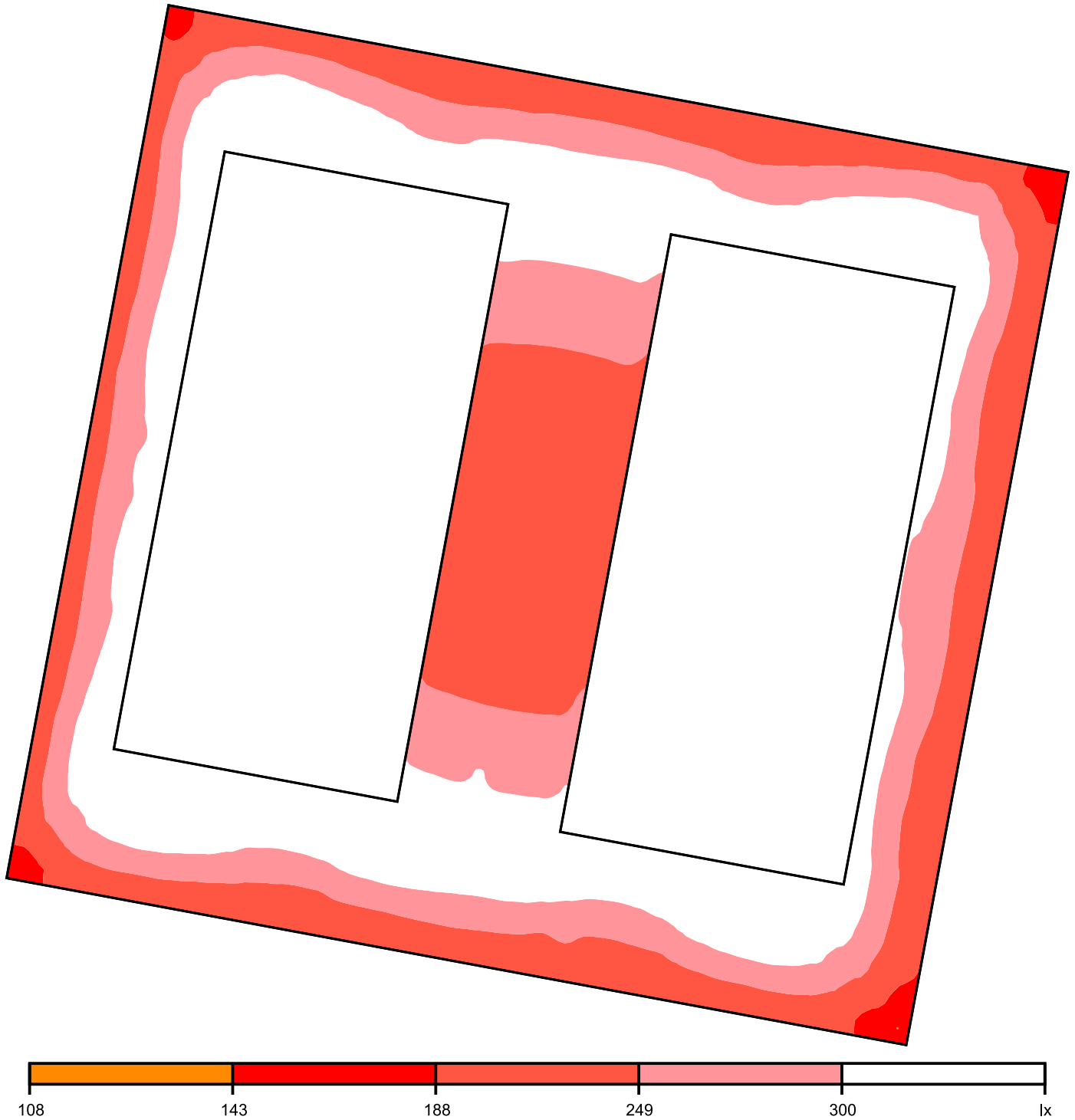
Calculated zone : Perpendicular illuminance (Grid)

Light scene: 1

Average: 275 lx, Min: 142 lx, Max: 389 lx, Min/average: 0.52, Min/max: 0.37

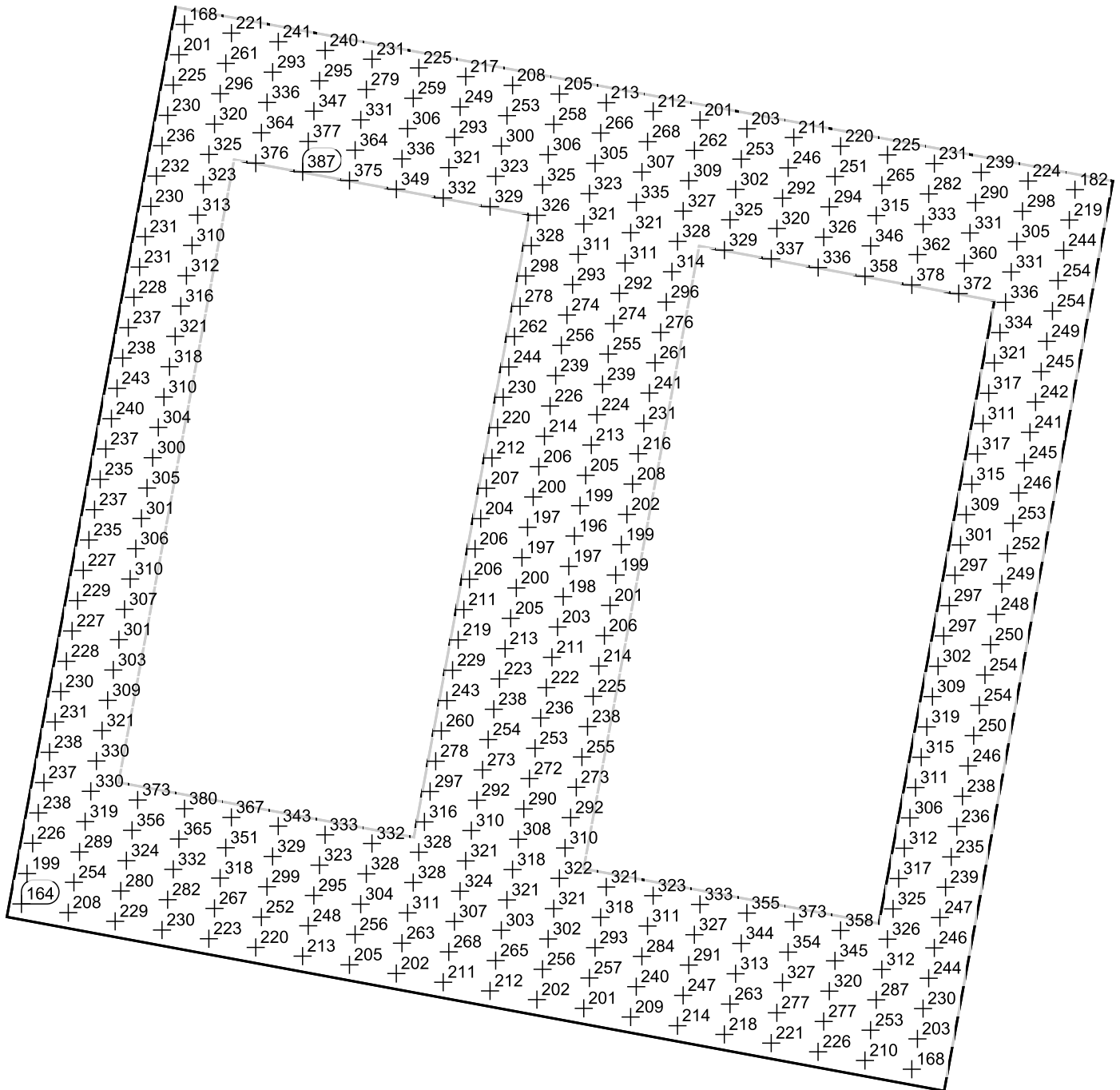
Height: 1.000 m

False colors [lx]



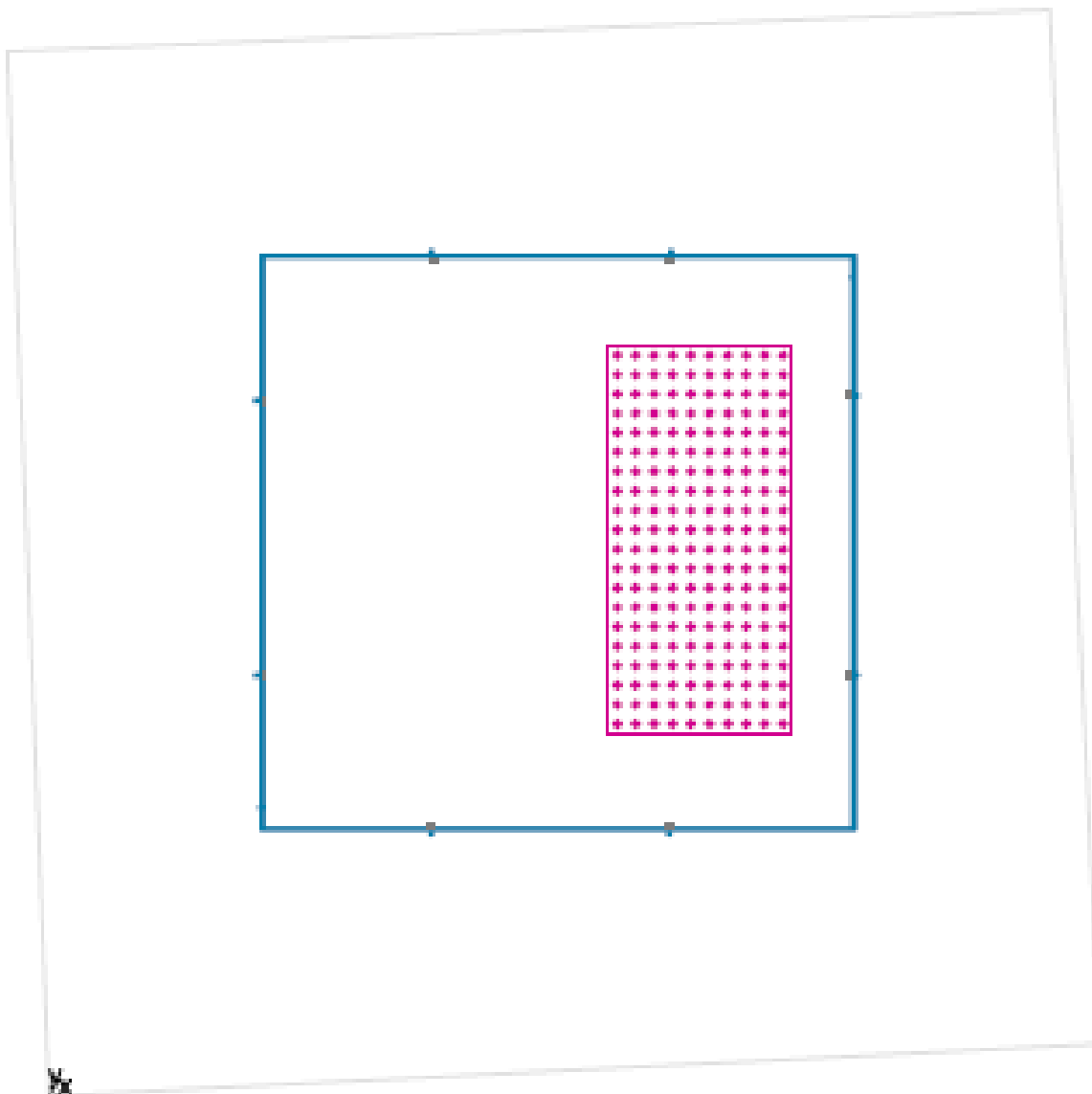
Scale: 1 : 222

Value grid [lx]



Scale: 1 : 222

Calculated zone 2 PPA _1 / Perpendicular illuminance



Light loss factor: 0.80

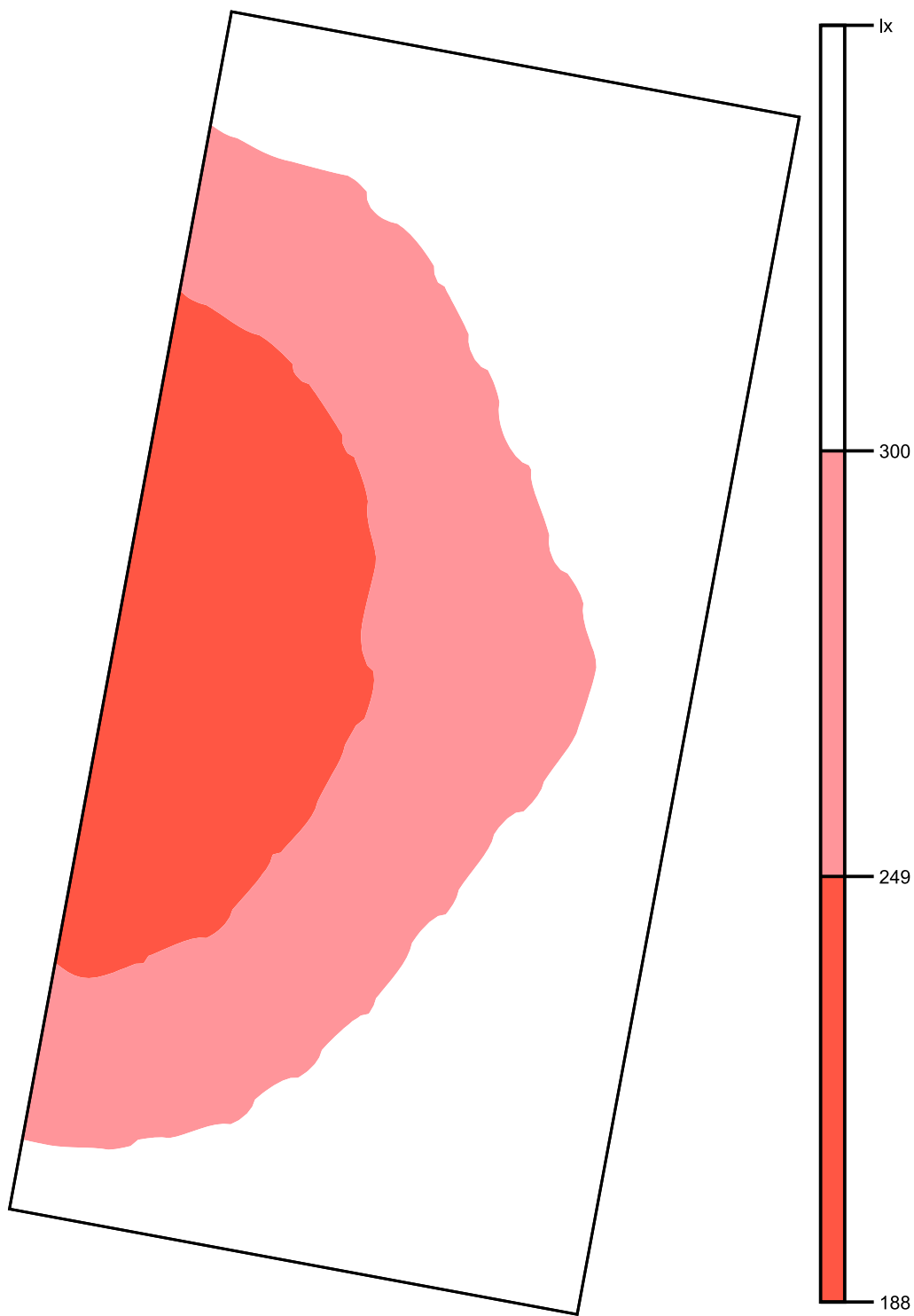
Calculated zone 2 PPA _1: Perpendicular illuminance (Grid)

Light scene: 1

Average: 293 lx, Min: 205 lx, Max: 373 lx, Min/average: 0.70, Min/max: 0.55

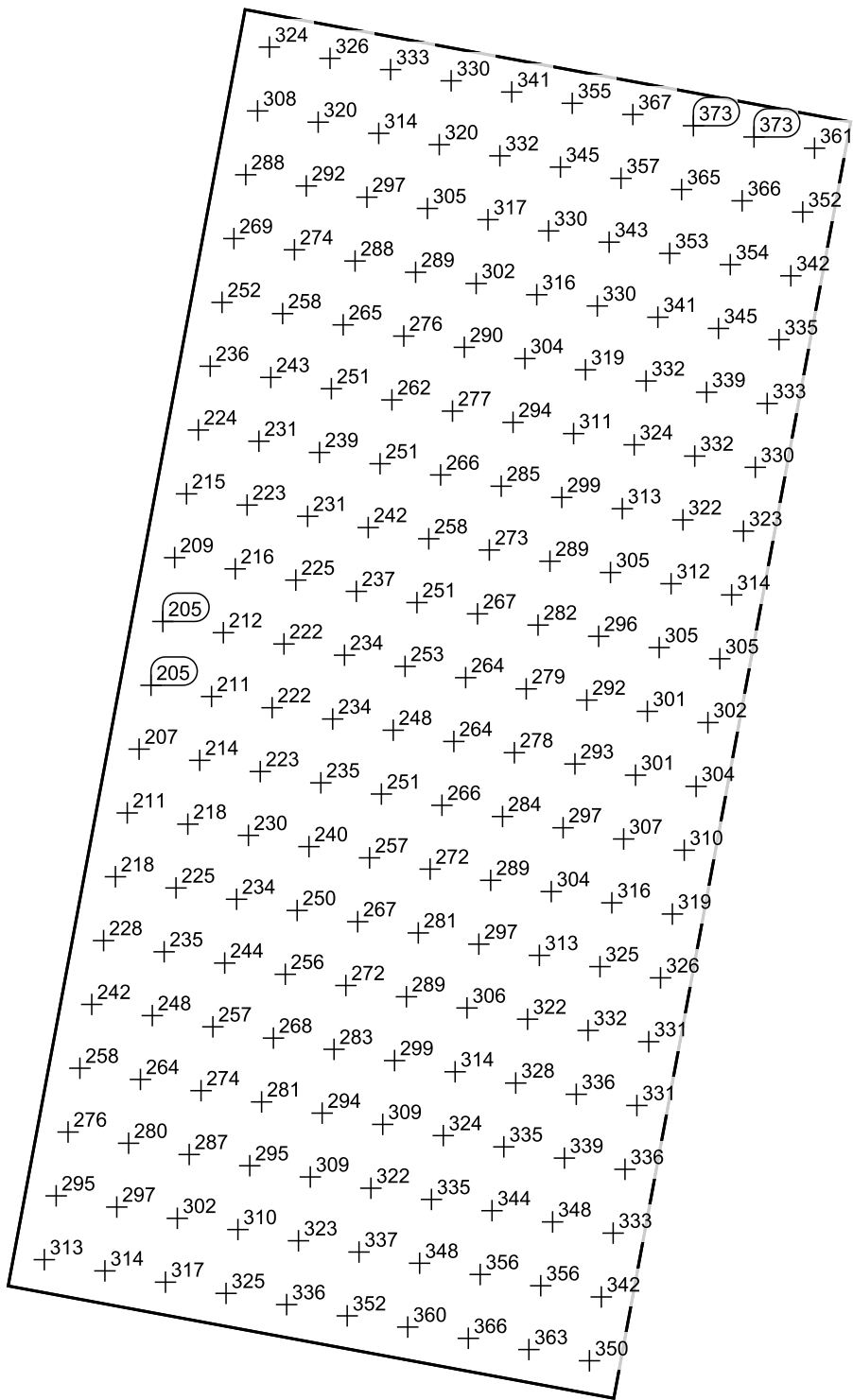
Height: 1.000 m

False colors [lx]



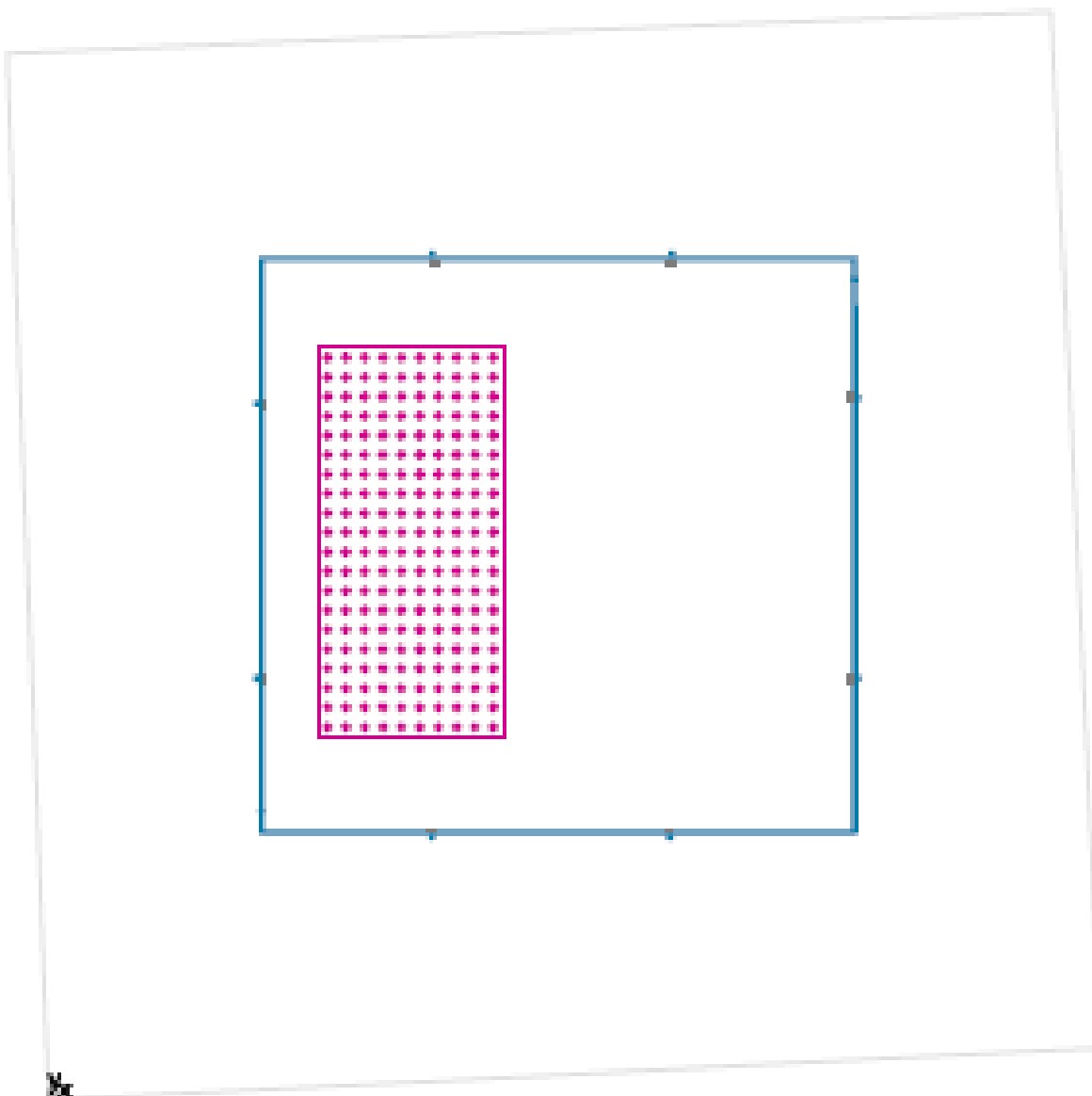
Scale: 1 : 128

Value grid [lx]



Scale: 1 : 128

Calculated zone 2 PPA_2 / Perpendicular illuminance



Light loss factor: 0.80

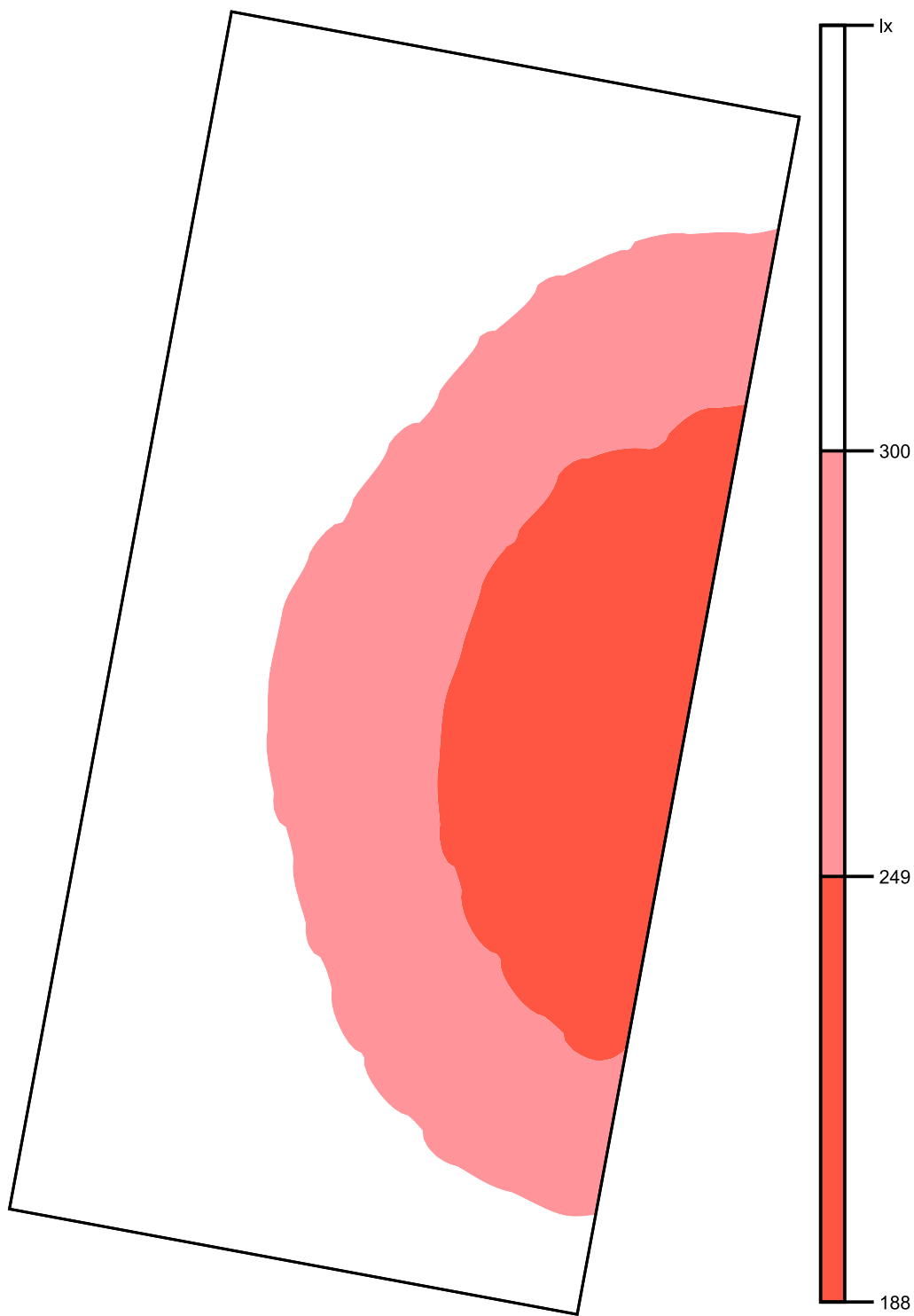
Calculated zone 2 PPA_2: Perpendicular illuminance (Grid)

Light scene: 1

Average: 302 lx, Min: 207 lx, Max: 387 lx, Min/average: 0.69, Min/max: 0.53

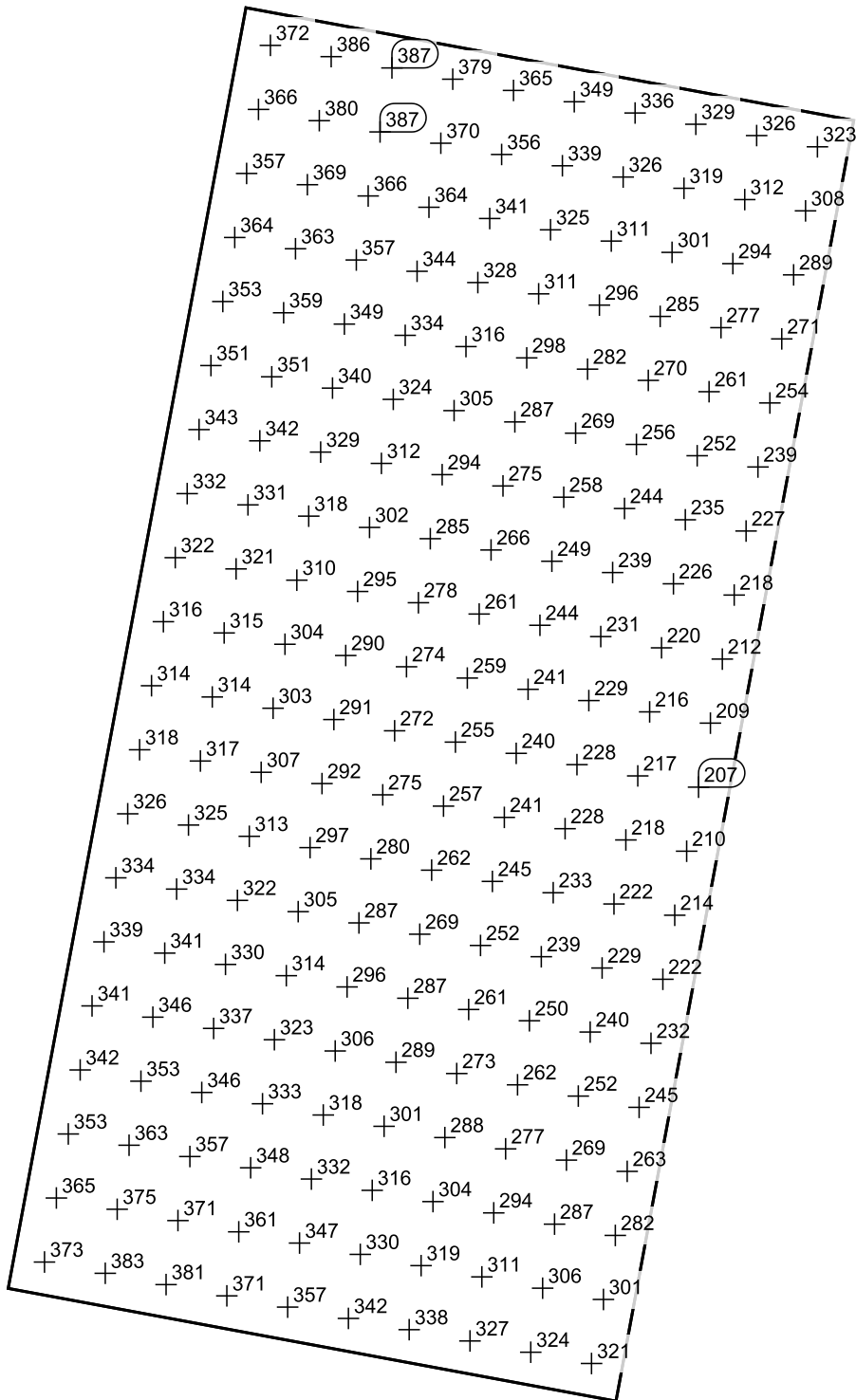
Height: 1.000 m

False colors [lx]



Scale: 1 : 128

Value grid [lx]



Scale: 1 : 128