

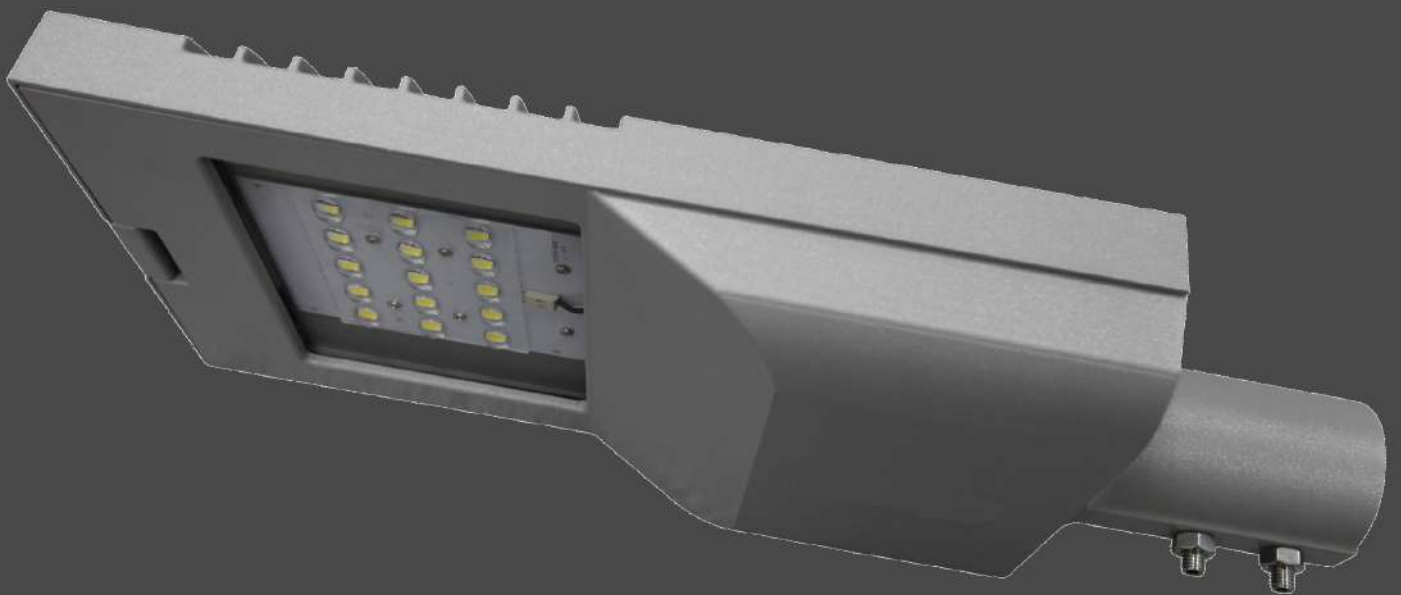


Lighting Design

SAMPLE

Car Park Lighting

Vero ST 55W (55 Watt)



Cover page	1
Content	2
Luminaire list	3

Car Park Lighting

Luminaire layout plan	8
Calculation objects	10
PARKING AREA 1 / Perpendicular illuminance	12
PARKING AREA 2 / Perpendicular illuminance	13
PARKING AREA 3 / Perpendicular illuminance	14
ZONE 1 / Perpendicular illuminance	15
CENTRAL ENTRANCE / Perpendicular illuminance	16

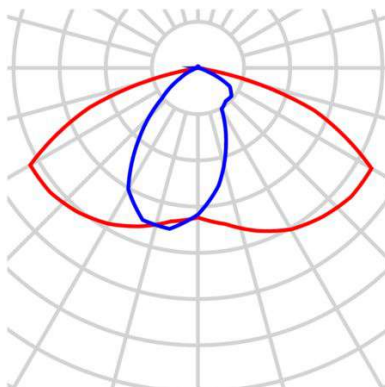
Luminaire list

Φ_{total}
314925 lm

P_{total}
2978.4 W

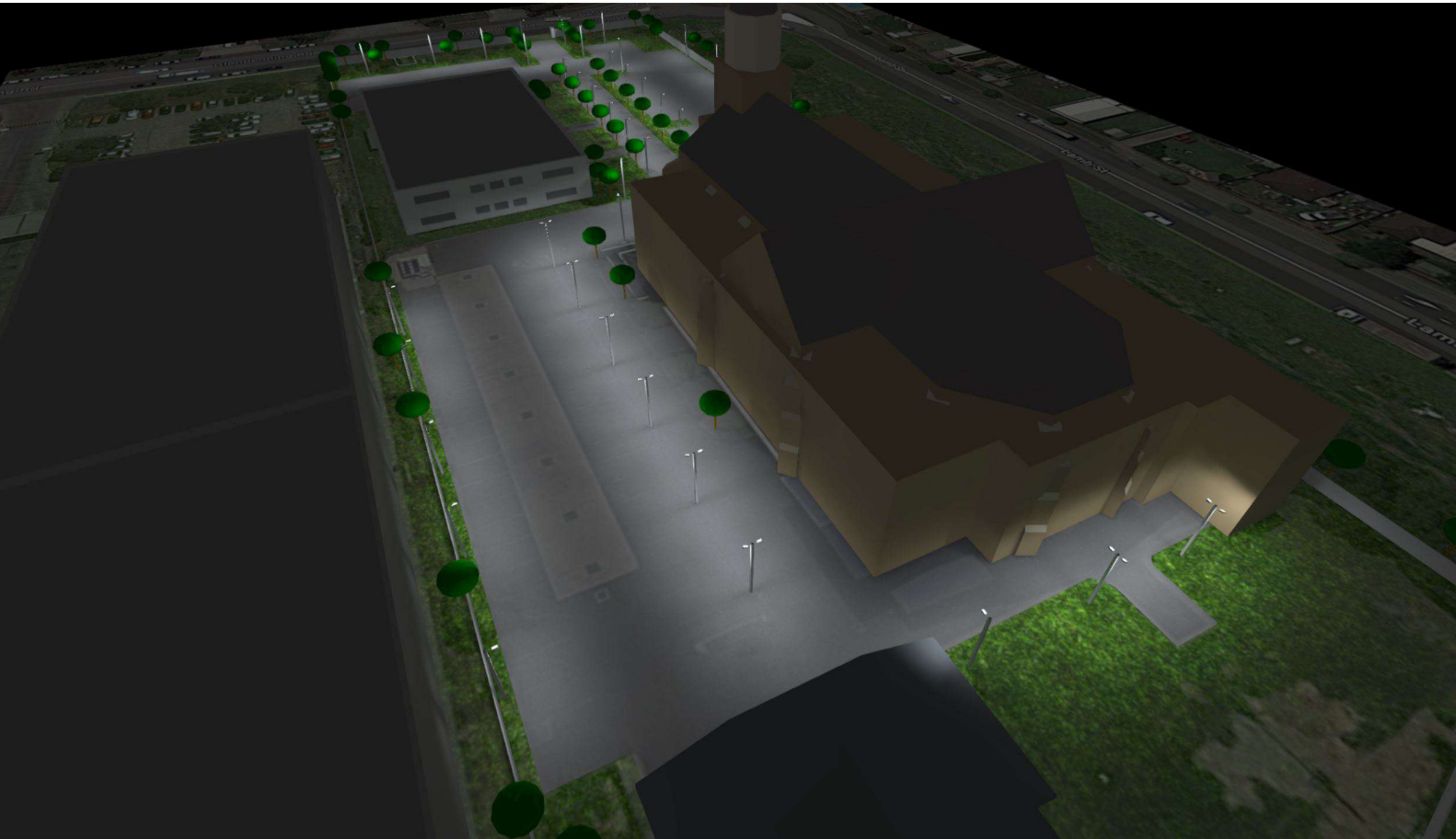
Luminous efficacy
105.7 lm/W

Vero ST 55W

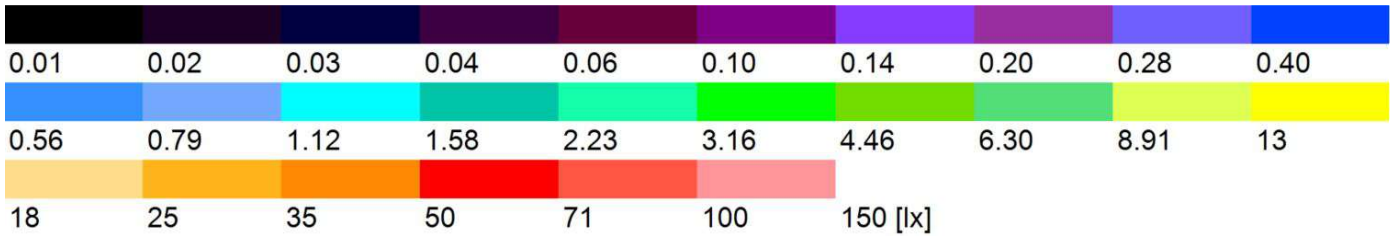
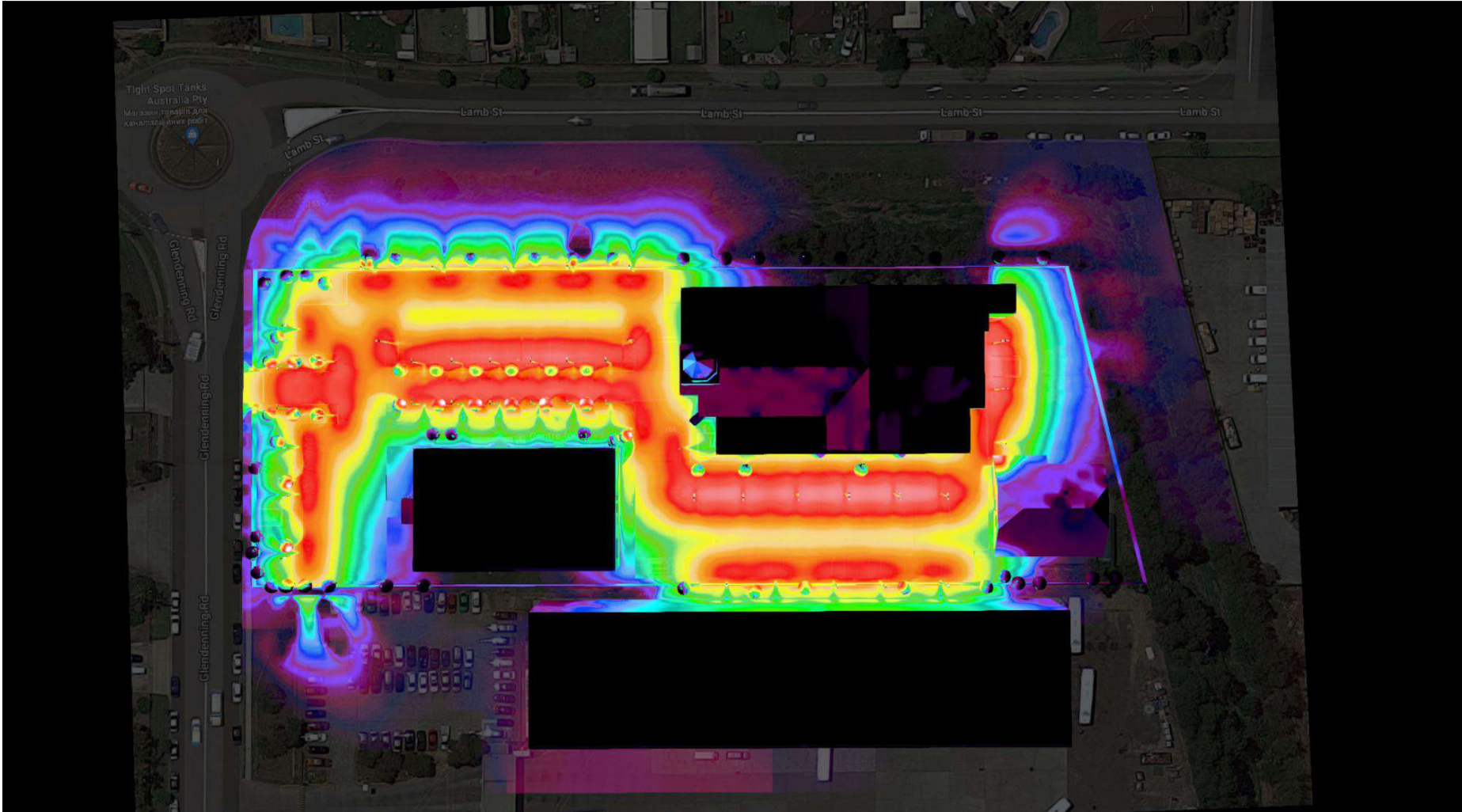


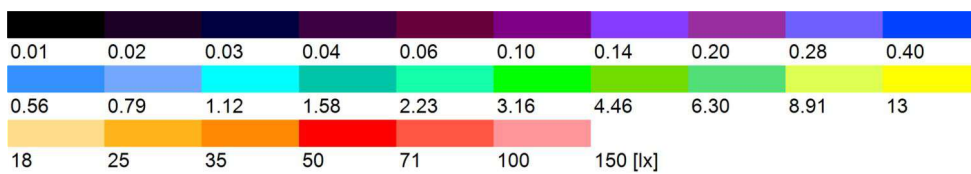
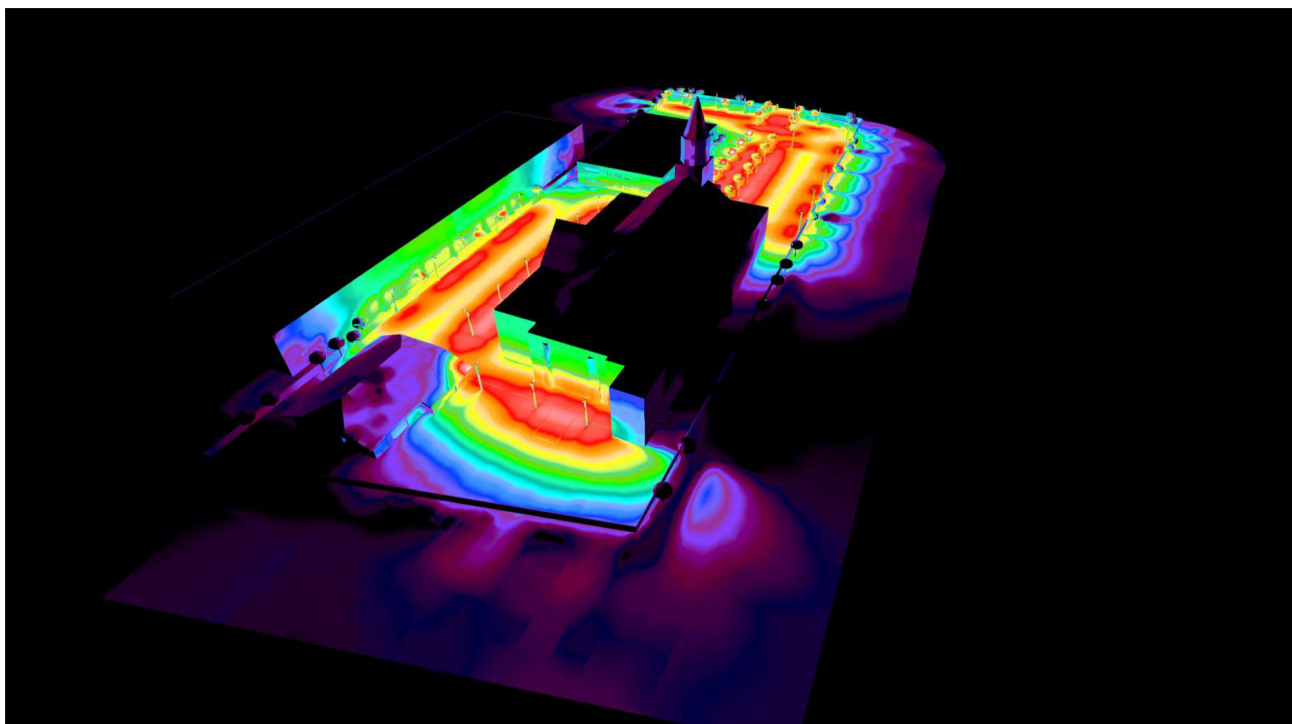
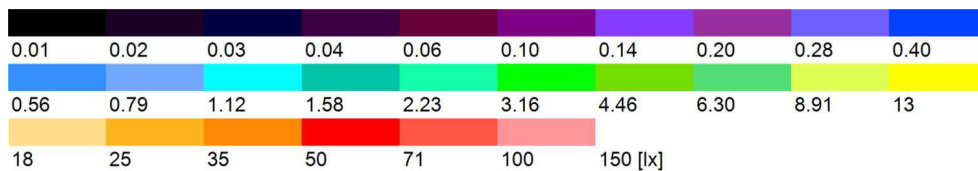
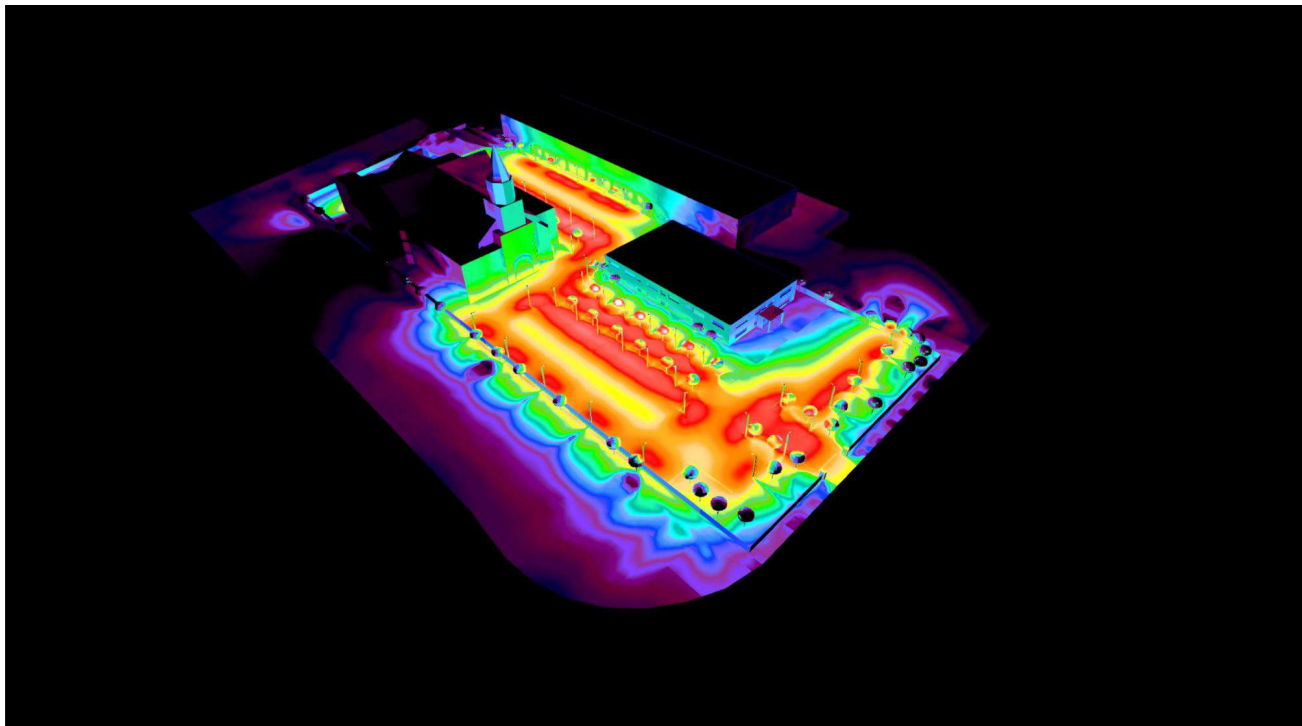
pcs.	51
Article No.	Vizona VERO ST 55W
Article name	Vizona VERO ST 55W

P	58.4 W
$\Phi_{Luminaire}$	6175 lm
Luminous efficacy	105.7 lm/W

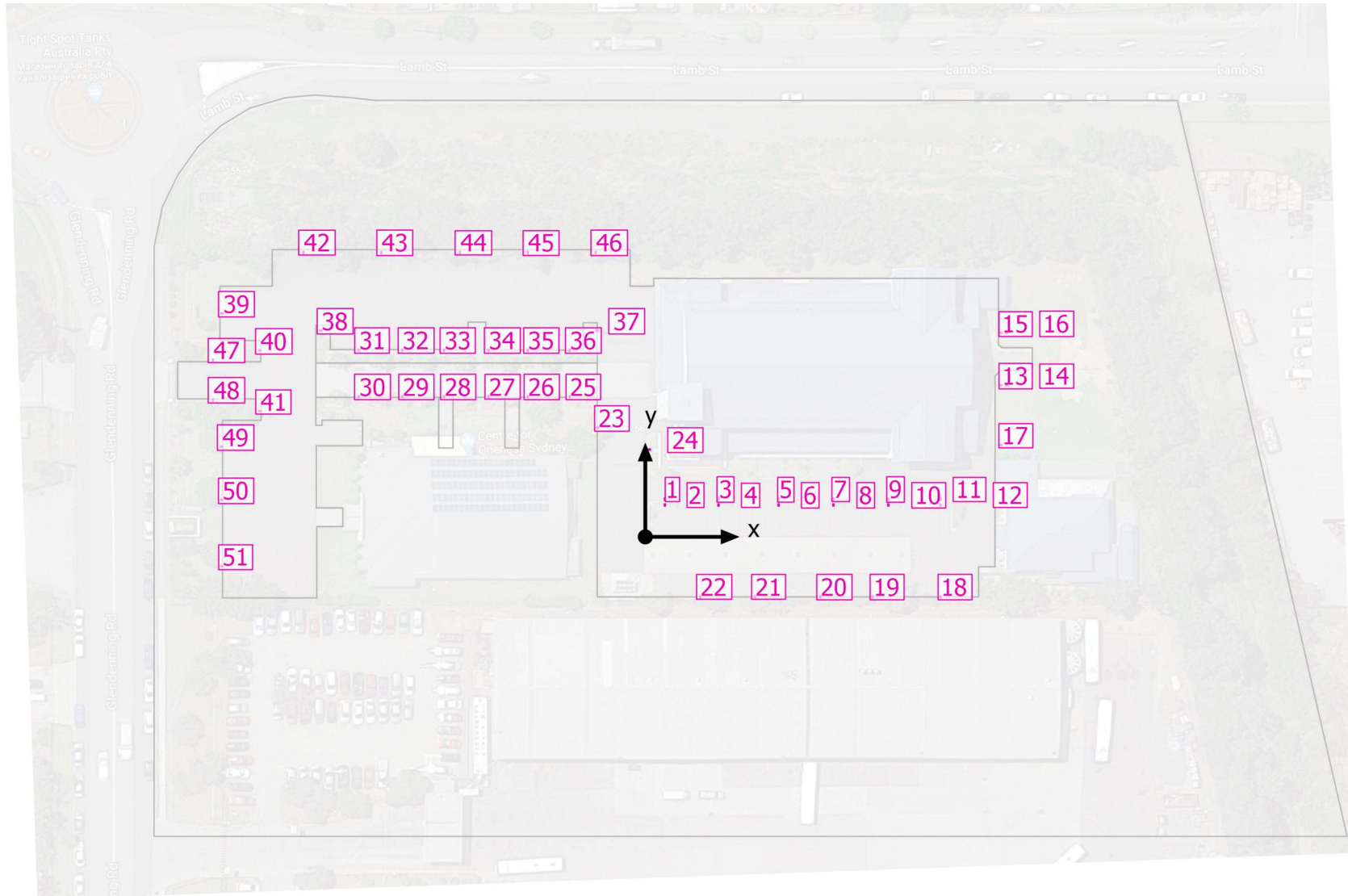








Luminaire layout plan



Luminaire layout plan

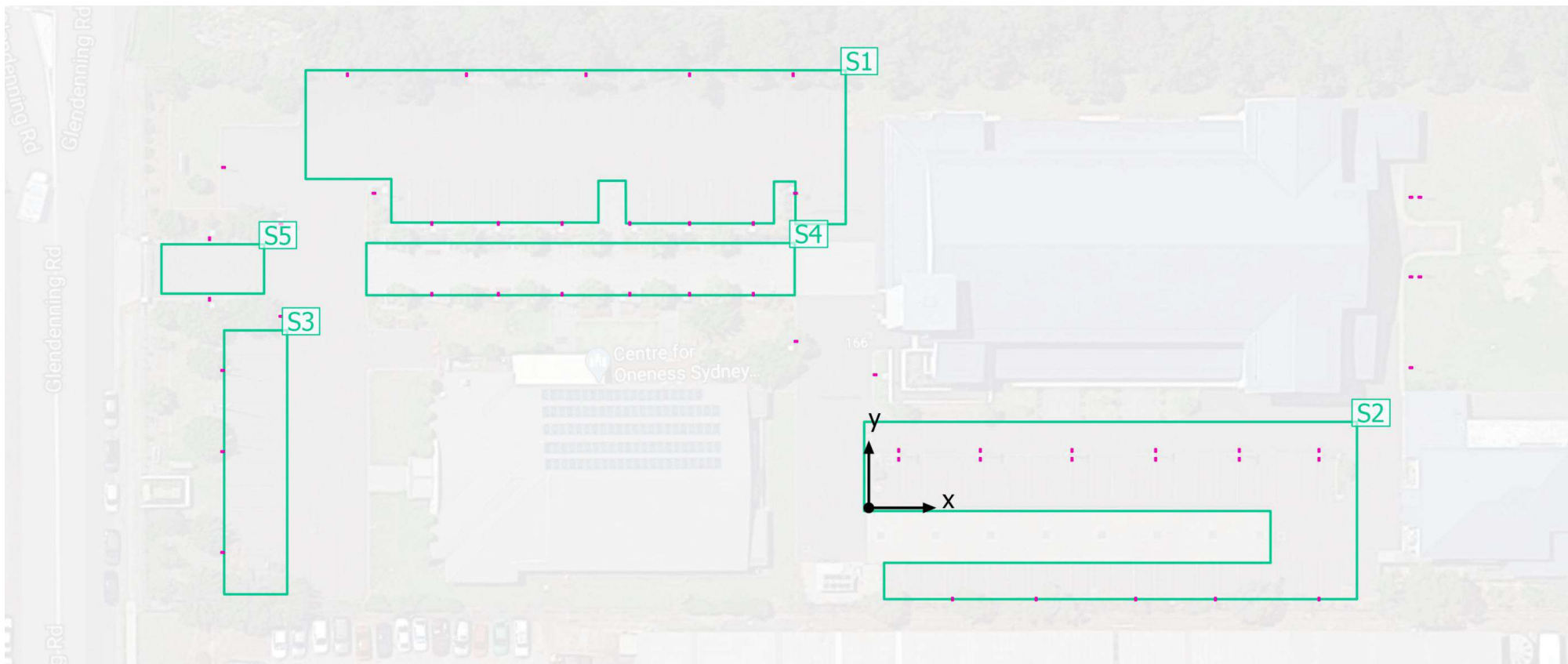
Article No.	Vizona VERO ST 55W
Article name	Vizona VERO ST 55W



Individual luminaires

X	Y	Mounting height	Luminaire
3.750 m	7.200 m	6.000 m	1
3.750 m	6.100 m	6.000 m	2
14.000 m	7.200 m	6.000 m	3
14.000 m	6.100 m	6.000 m	4
25.500 m	7.200 m	6.000 m	5
25.500 m	6.100 m	6.000 m	6
36.000 m	7.200 m	6.000 m	7
36.000 m	6.100 m	6.000 m	8
46.500 m	7.200 m	6.000 m	9
46.500 m	6.100 m	6.000 m	10
56.500 m	7.200 m	6.000 m	11
56.500 m	6.100 m	6.000 m	12
68.050 m	29.000 m	6.000 m	13
69.150 m	29.000 m	6.000 m	14
68.050 m	39.000 m	6.000 m	15
69.150 m	39.000 m	6.000 m	16
68.050 m	17.600 m	6.000 m	17
56.500 m	-11.469 m	6.000 m	18
43.500 m	-11.469 m	6.000 m	19
33.500 m	-11.469 m	6.000 m	20
21.000 m	-11.469 m	6.000 m	21
10.500 m	-11.469 m	6.000 m	22
-9.145 m	20.901 m	6.000 m	23
0.800 m	16.711 m	6.000 m	24
-14.500 m	26.812 m	6.000 m	25
-22.500 m	26.812 m	6.000 m	26
-30.000 m	26.812 m	6.000 m	27
-38.500 m	26.812 m	6.000 m	28
-46.500 m	26.812 m	6.000 m	29
-54.849 m	26.812 m	6.000 m	30
-54.851 m	35.700 m	6.000 m	31
-46.500 m	35.700 m	6.000 m	32
-38.500 m	35.700 m	6.000 m	33
-30.000 m	35.700 m	6.000 m	34
-22.500 m	35.700 m	6.000 m	35
-14.500 m	35.700 m	6.000 m	36
-9.212 m	39.500 m	6.000 m	37
-62.100 m	39.500 m	6.000 m	38
-81.000 m	42.750 m	6.000 m	39
-73.803 m	35.650 m	6.000 m	40
-73.803 m	24.050 m	6.000 m	41
-65.441 m	54.400 m	6.000 m	42
-50.500 m	54.400 m	6.000 m	43
-35.500 m	54.400 m	6.000 m	44
-22.500 m	54.400 m	6.000 m	45
-9.500 m	54.400 m	6.000 m	46
-82.750 m	33.800 m	6.000 m	47
-82.750 m	26.181 m	6.000 m	48
-81.112 m	17.250 m	6.000 m	49
-81.112 m	7.056 m	6.000 m	50
-81.112 m	-5.600 m	6.000 m	51

Calculation objects



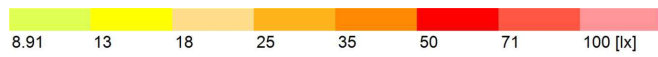
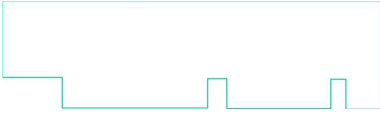
Calculation objects

Calculation surfaces

Properties	\bar{E}	E_{min}	E_{max}	g_1	g_2	Index
PARKING AREA 1 Perpendicular illuminance Height: 0.000 m	36.6 lx	12.0 lx	87.6 lx	0.33	0.14	S1
PARKING AREA 2 Perpendicular illuminance Height: 0.000 m	53.7 lx	10.5 lx	95.2 lx	0.20	0.11	S2
PARKING AREA 3 Perpendicular illuminance Height: 0.000 m	34.6 lx	6.94 lx	59.9 lx	0.20	0.12	S3
ZONE 1 Perpendicular illuminance Height: 0.800 m	55.9 lx	7.01 lx	92.2 lx	0.13	0.076	S4
CENTRAL ENTRANCE Perpendicular illuminance Height: 0.000 m	55.8 lx	31.7 lx	68.3 lx	0.57	0.46	S5

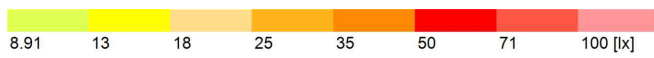
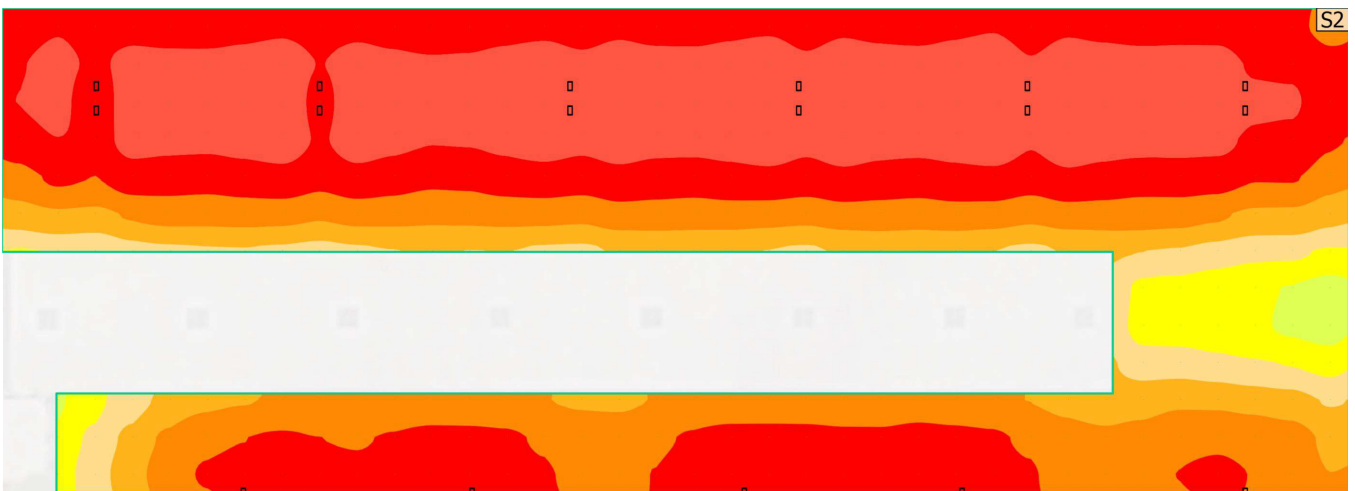
Utilisation profile: DIALux presetting, Standard (outdoor transportation area)

PARKING AREA 1



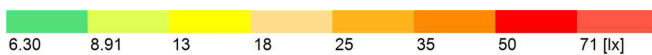
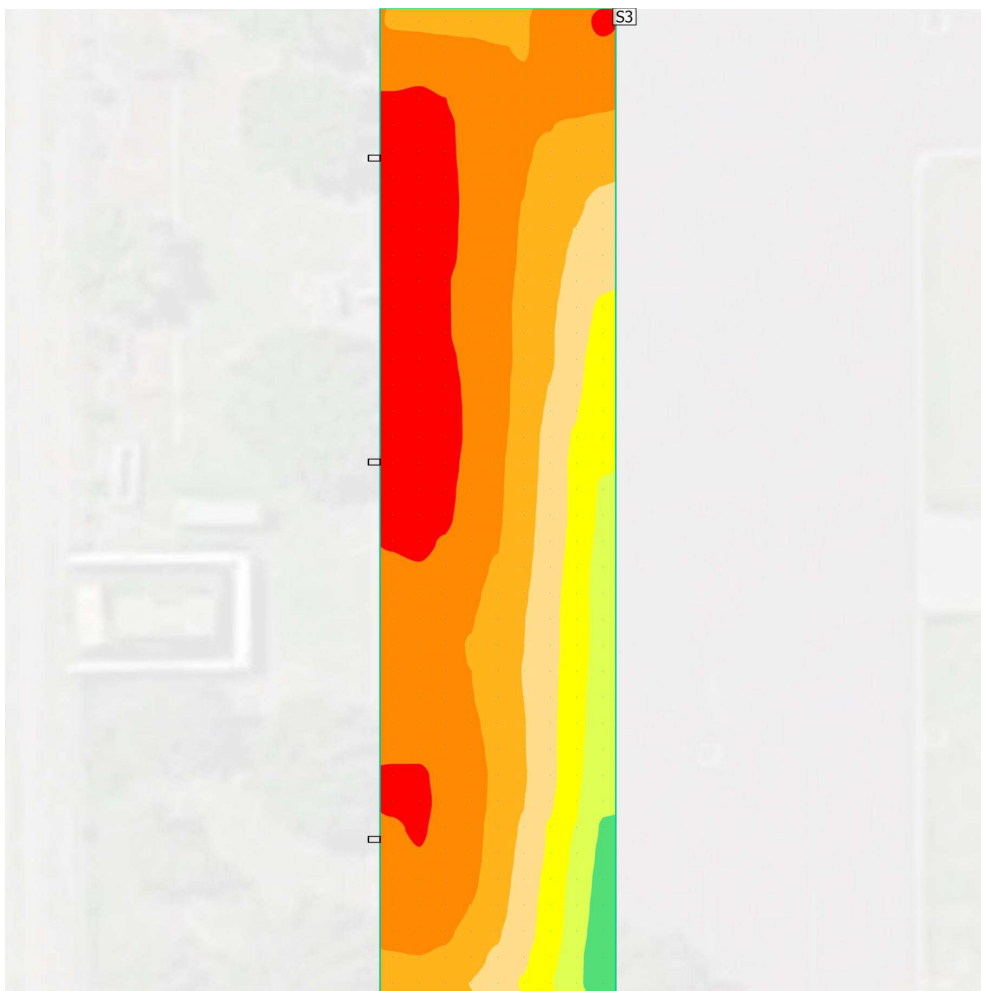
Properties	\bar{E}	E_{\min}	E_{\max}	g_1	g_2	Index
PARKING AREA 1 Perpendicular illuminance Height: 0.000 m	36.6 lx	12.0 lx	87.6 lx	0.33	0.14	S1

PARKING AREA 2



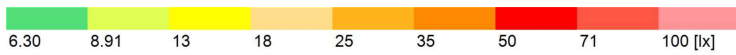
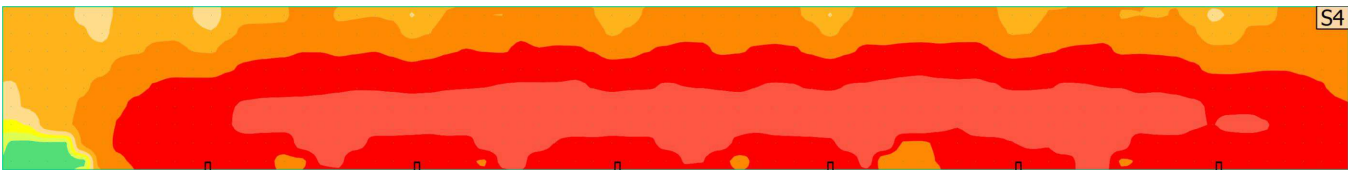
Properties	\bar{E}	E_{min}	E_{max}	g_1	g_2	Index
PARKING AREA 2 Perpendicular illuminance Height: 0.000 m	53.7 lx	10.5 lx	95.2 lx	0.20	0.11	S2

PARKING AREA 3



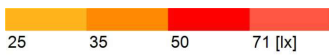
Properties	\bar{E}	E_{min}	E_{max}	g_1	g_2	Index
PARKING AREA 3 Perpendicular illuminance Height: 0.000 m	34.6 lx	6.94 lx	59.9 lx	0.20	0.12	S3

ZONE 1



Properties	\bar{E}	E_{min}	E_{max}	g_1	g_2	Index
ZONE 1 Perpendicular illuminance Height: 0.800 m	55.9 lx	7.01 lx	92.2 lx	0.13	0.076	S4

CENTRAL ENTRANCE



Properties	\bar{E}	E_{min}	E_{max}	g_1	g_2	Index
CENTRAL ENTRANCE Perpendicular illuminance Height: 0.000 m	55.8 lx	31.7 lx	68.3 lx	0.57	0.46	S5