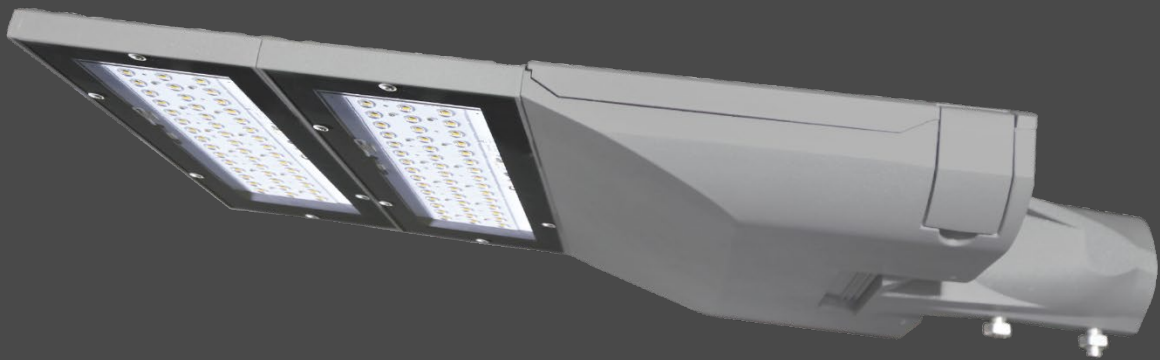




Lighting Design
SAMPLE
Car Wash Lighting

Zora ST180W (180 Watt)





Content

CAR WASH LIGHTING

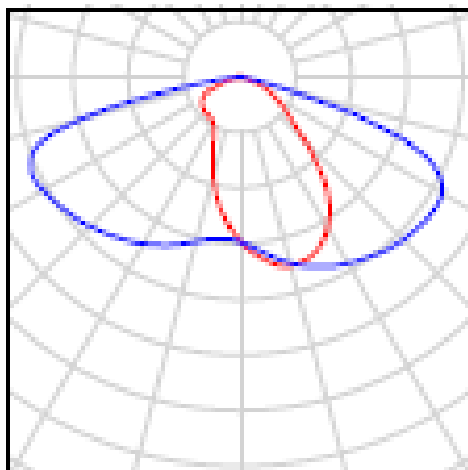
Luminaire list.....	3
Views.....	4
CAR WASH	
Luminaire layout plan.....	7
Calculated area / Perpendicular illuminance.....	8

CAR WASH LIGHTING

Quantity	Luminaire (Luminous emittnce)
----------	-------------------------------

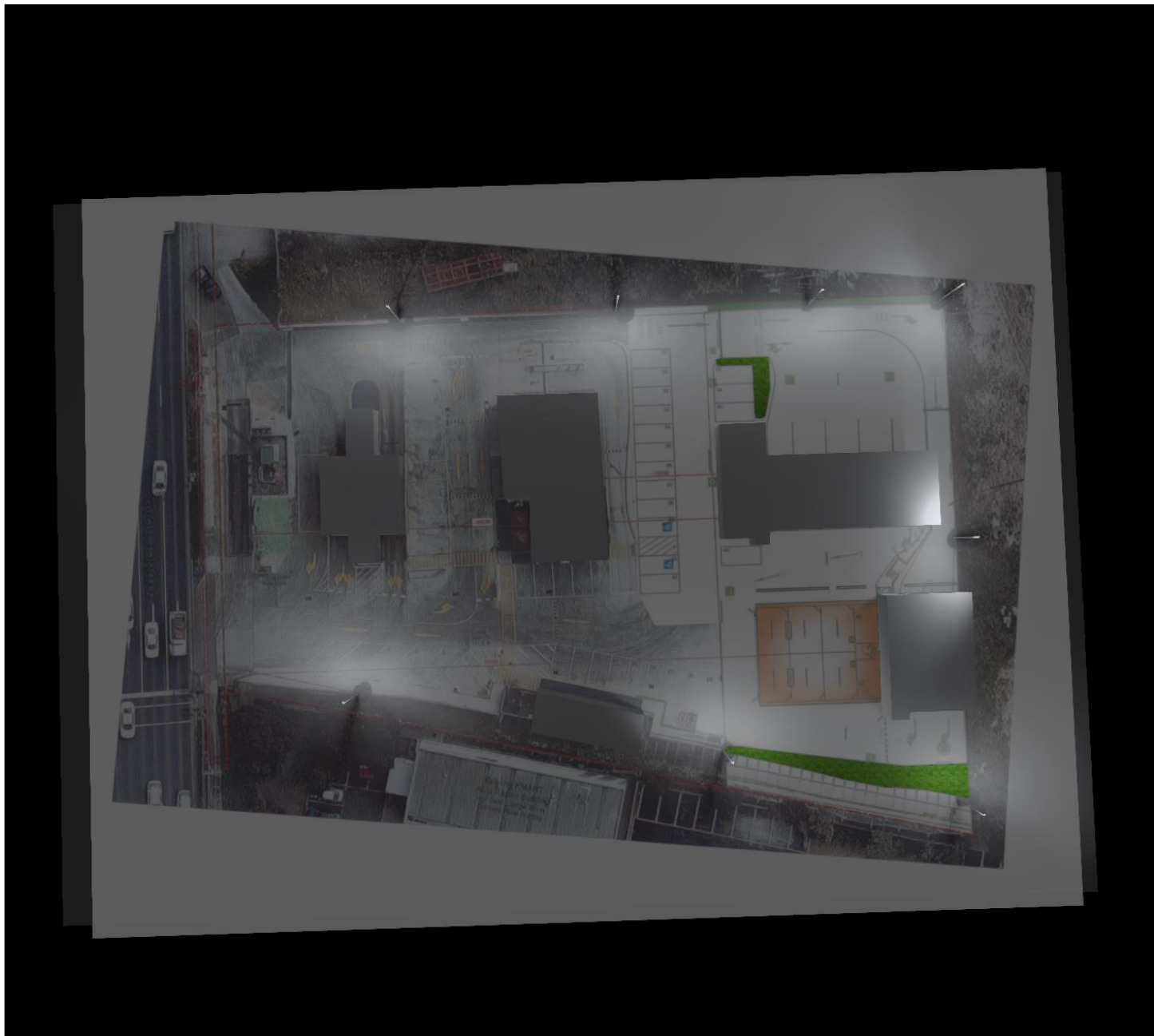
8

Vizona Zora ST180
Luminous emittance 1
Fitting: 1x
Light output ratio: 100.00%Lamp
luminous flux: 25378 lm Luminaire
luminous flux: 25377 lm Power: 184.5 W
Luminous efficacy: 137.5 lm/W

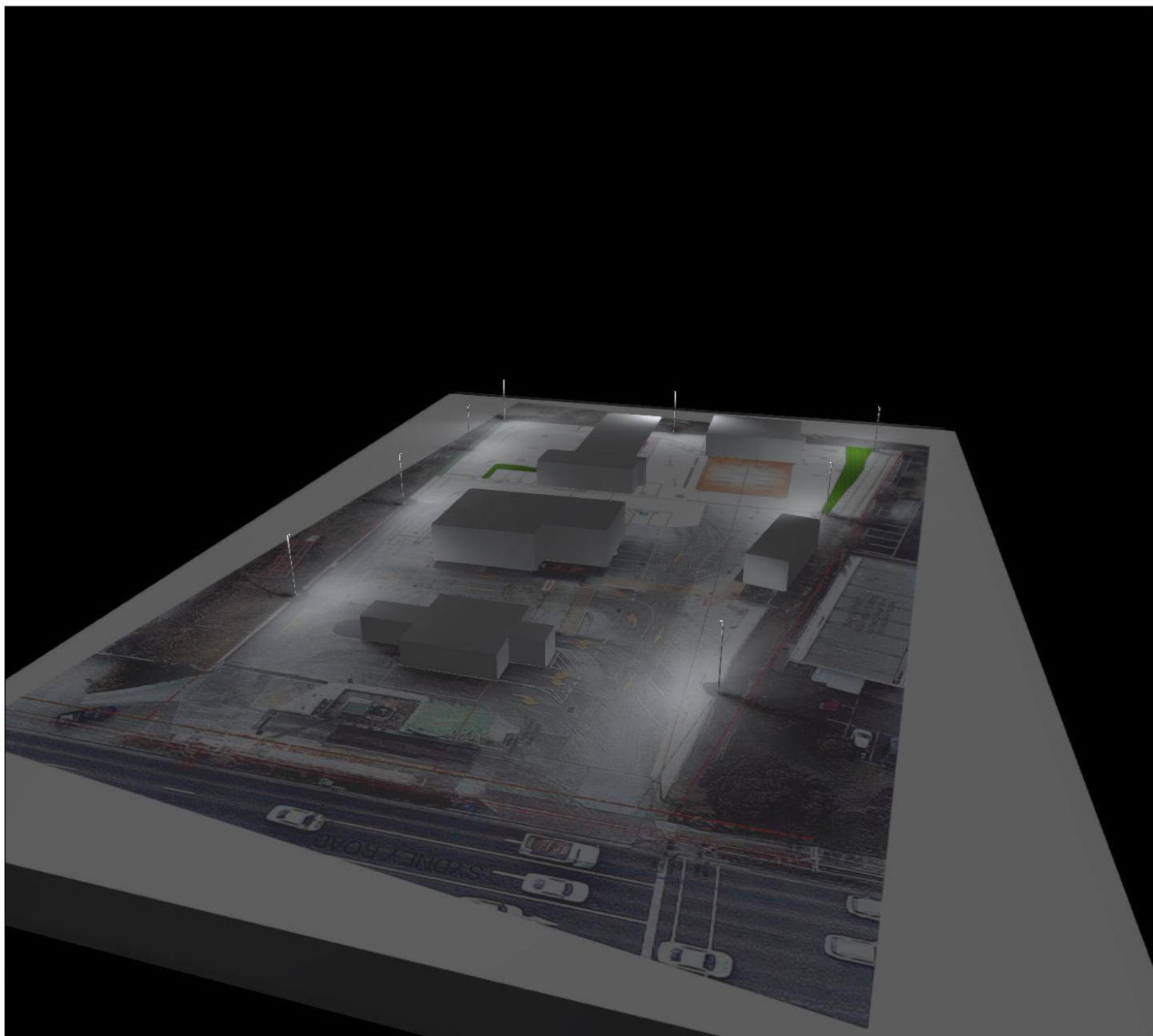


Total lamp luminous flux: 203024 lm, Total luminaire luminous flux: 203016 lm, Total Load: 1476.0 W, Luminous efficacy: 137.5 lm/W

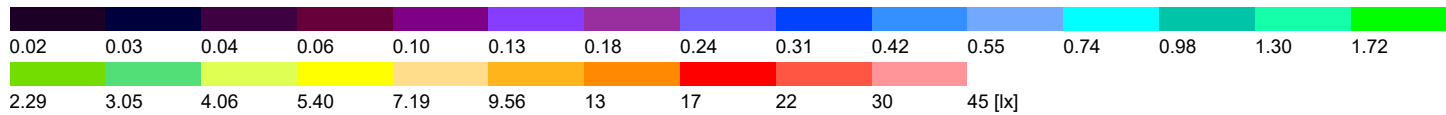
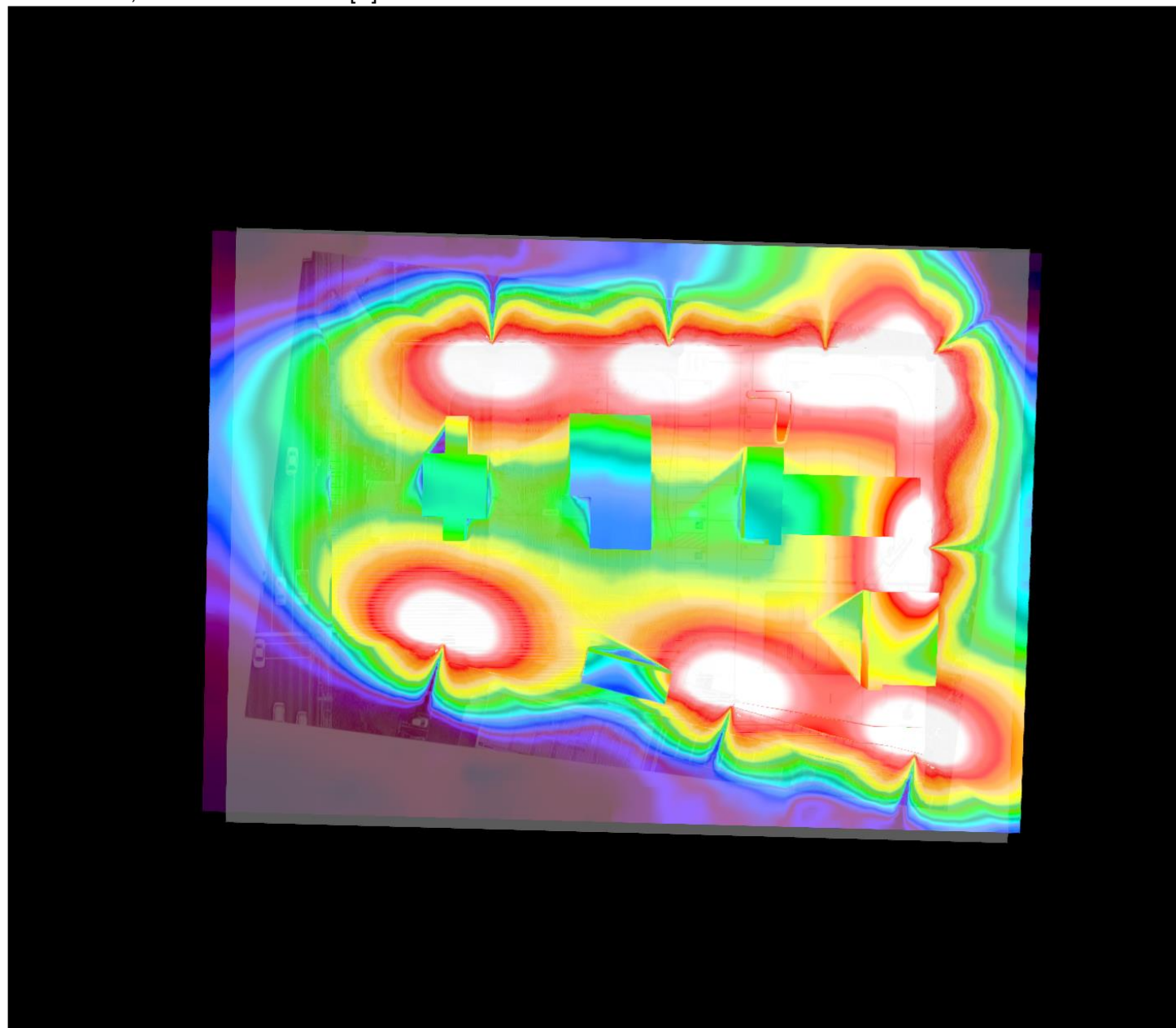
CAR WASH LIGHTING



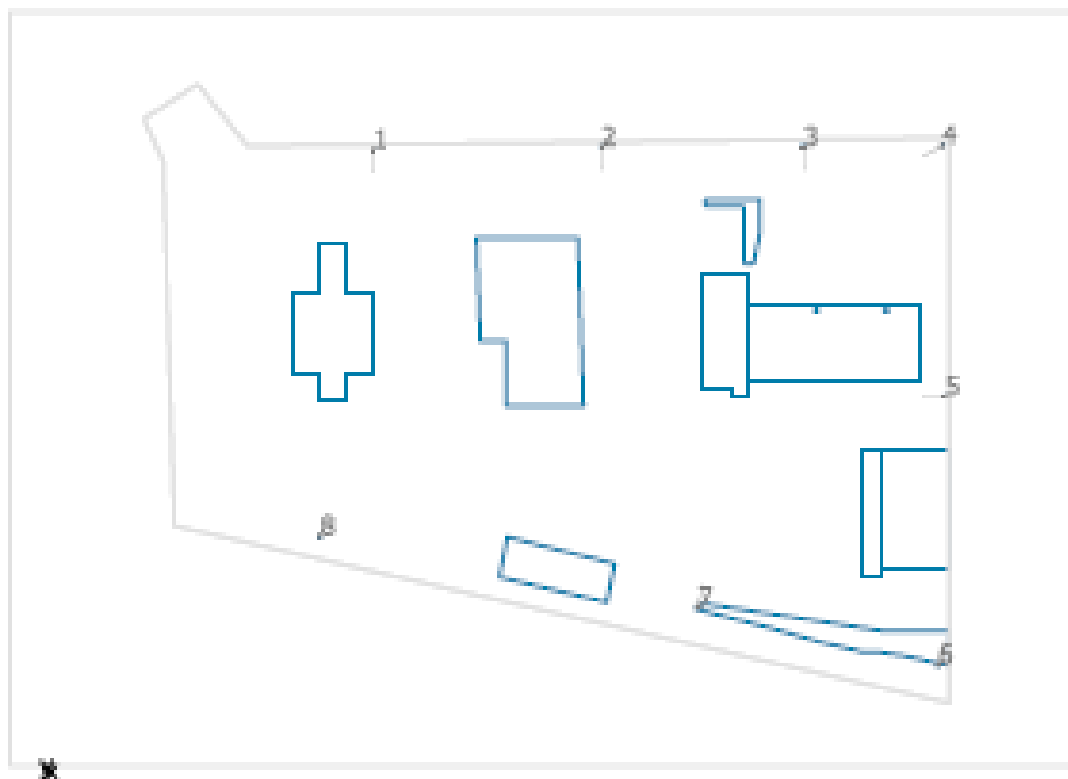
CAR WASH



CAR WASH , Illuminance values in [lx]



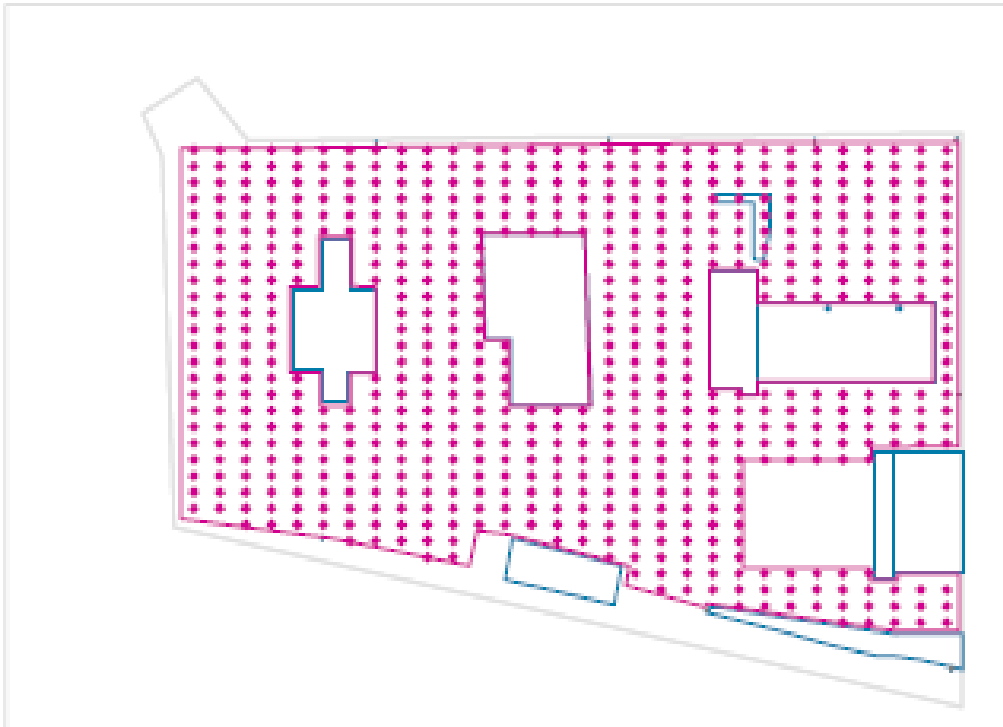
CAR WASH



Street Light (Vizona Zora ST180)

No.	X [m]	Y [m]	Mounting height [m]	Light loss factor
1	43.375	82.075	8.000	0.85
2	73.100	82.375	8.000	0.85
3	99.500	82.375	8.000	0.85
4	117.546	82.527	8.000	0.85
5	117.875	49.925	8.000	0.85
6	117.001	14.933	8.000	0.85
7	85.643	22.433	8.000	0.85
8	36.500	31.640	8.000	0.85

Calculated area / Perpendicular illuminance



Light loss factor: 0.85

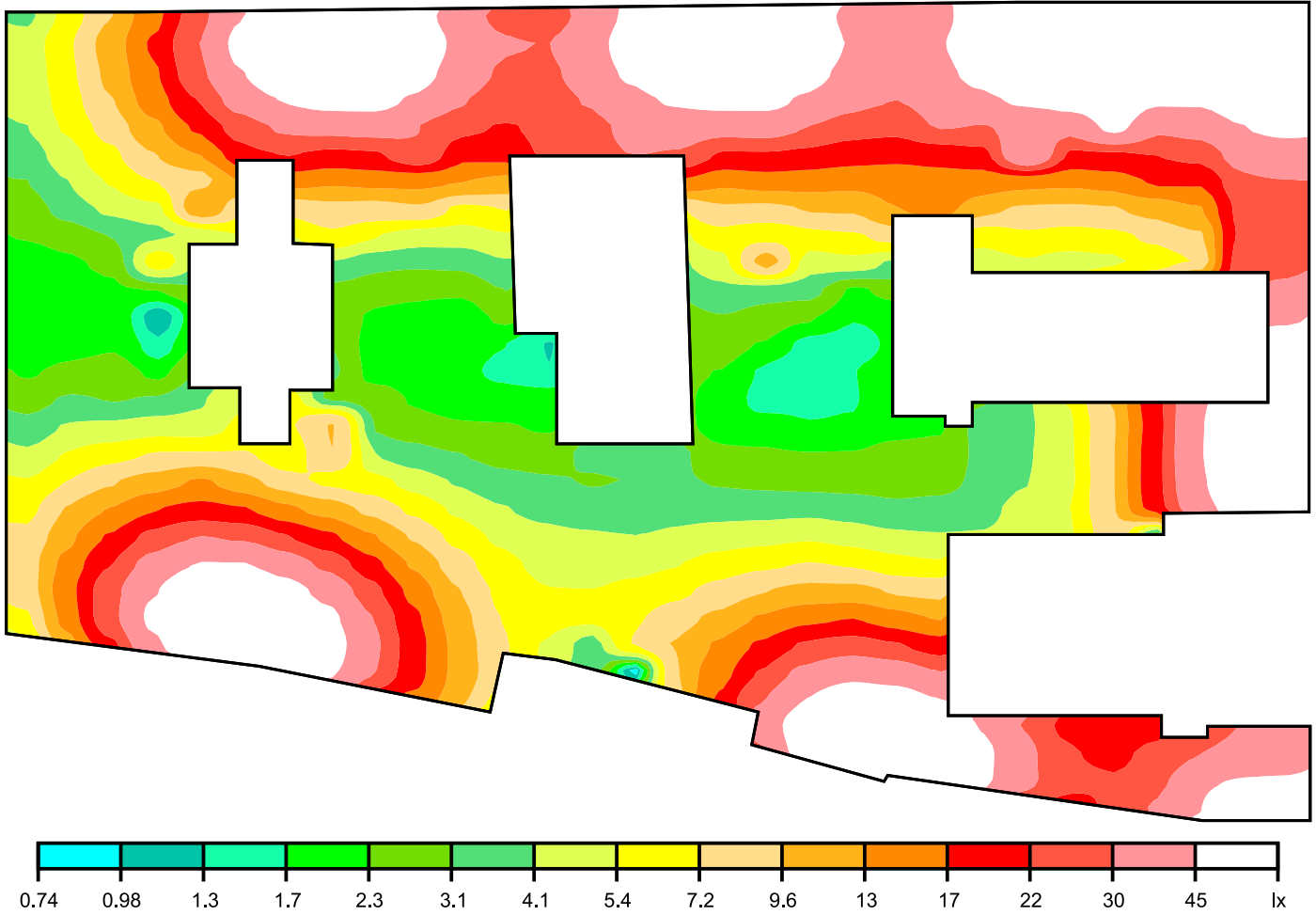
Calculated area: Perpendicular illuminance (Grid)

Light scene: 1

Average: 23.3 lx, Min: 0.76 lx, Max: 103 lx, Min/average: 0.033, Min/max: 0.007

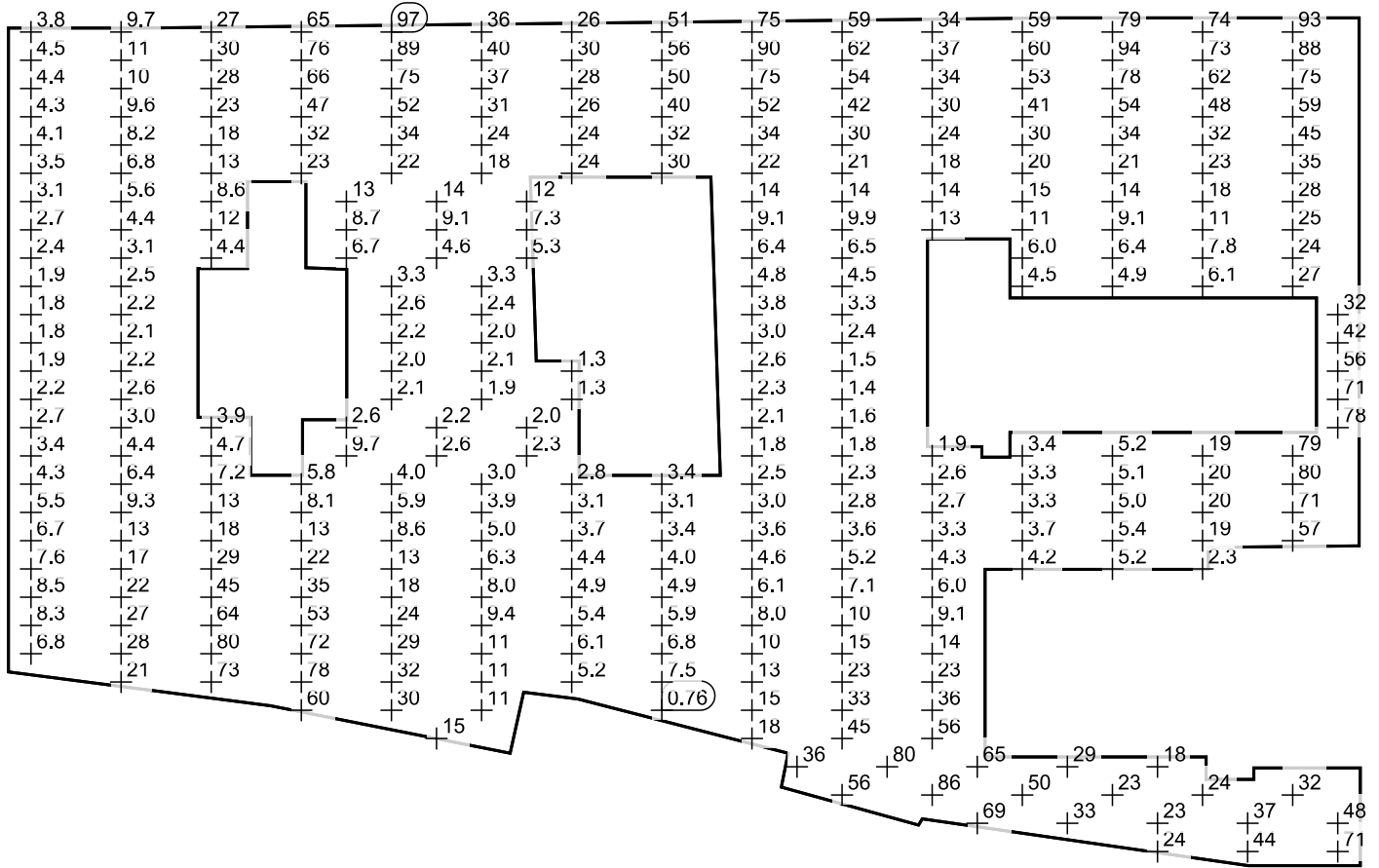
Height: 0.100 m

False colors [lx]



Scale: 1 : 543

Value grid [lx]



Scale: 1 : 543