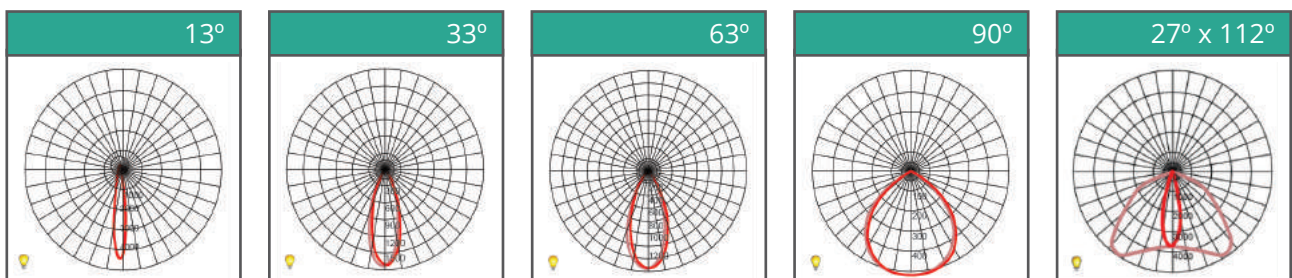


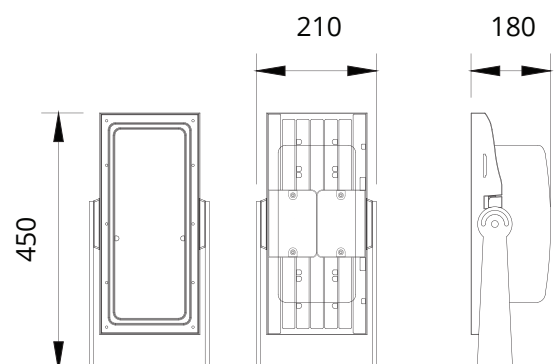


Blazor XSPL120

- Lumen Maintenance: L90 @ 70,000 hours
- Working Temperature: -25°C – 50°C
- Storage Temperature: -25°C – 80°C
- Power Factor: >0.95 at Full Load
- THD: <20% at Full Load
- Material: Casting Materials Pressure Casted Aluminum (Powder Coat Finished)

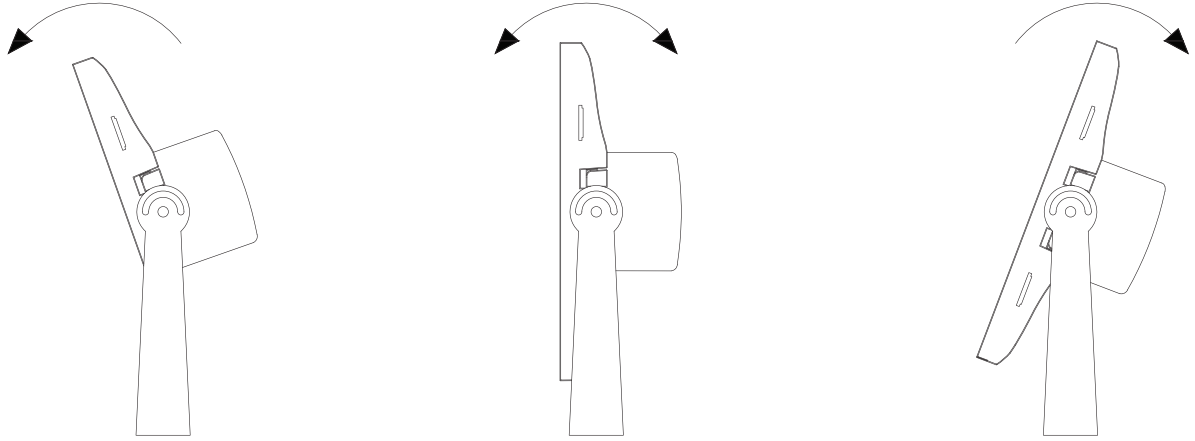


LED				
Type				
Watts	120W			
CCT	3500K	4000K	5000K	6000K
Efficacy	124 lm/w	130 lm/w	132 lm/w	132 lm/w
Lumen	14880 lm	15600 lm	15840 lm	15840 lm
Input Current	0.52A			
Ingress Protection	IP66			
Impact Protection	IK09			
Weight	7kg			
Working Temperature	-25 °C ~ 50 °C			



Mounting & Construction

Lamp Mounting



Heavy duty, slimline mounting bracket allows for 360 rotation of the lamp. Side locking bolts secure the exact angle.

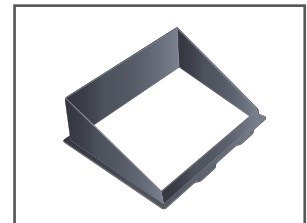
Pressure Cast Aluminium Casting ADC12
Powder-Coated Finish



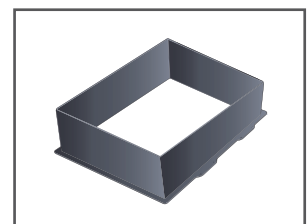
Options



Stainless Steel
Mounting Bracket



Half Glare Shield



Full Glare Shield



Driver and Electrical
Control Gear