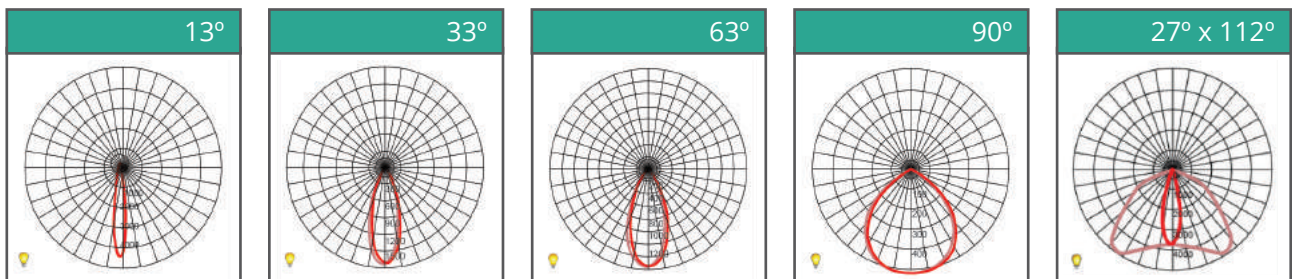
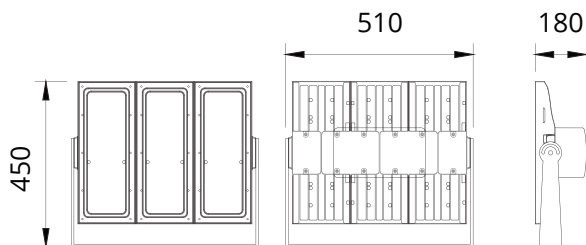




Blazor XSPL300 & XSPL360

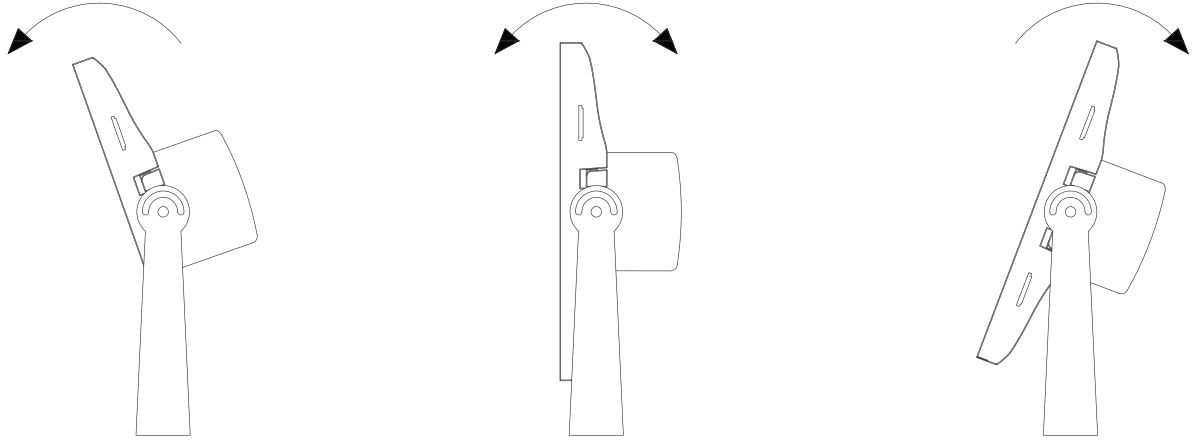
- Lumen Maintenance: L90 @ 70,000 hours
- Working Temperature: -25°C – 50°C
- Storage Temperature: -25°C – 80°C
- Power Factor: >0.95 at Full Load
- THD: <20% at Full Load
- Material: Casting Materials Pressure Casted Aluminum (Powder Coat Finished)



LED								
Type								
Watts	300W				360W			
CCT	3500K	4000K	5000K	6000K	3500K	4000K	5000K	6000K
Efficacy	132 lm/w	139 lm/w	141 lm/w	141 lm/w	122 lm/w	127 lm/w	129 lm/w	132 lm/w
Lumen	39600 lm	41700 lm	42300 lm	42300 lm	43920 lm	45720 lm	46440 lm	47520 lm
Input Current	1.30A				1.56A			
Ingress Protection	IP66				IP66			
Impact Protection	IK09				IK09			
Weight	15kg				15kg			
Working Temperature	-25°C ~ 50°C				-25°C ~ 50°C			

Mounting & Construction

Lamp Mounting



Heavy duty, slimline mounting bracket allows for 360 rotation of the lamp. Side locking bolts secure the exact angle.

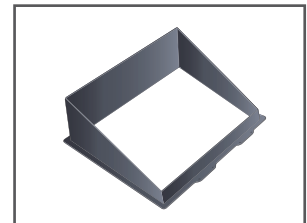
Pressure Cast Aluminium Casting ADC12
Powder-Coated Finish



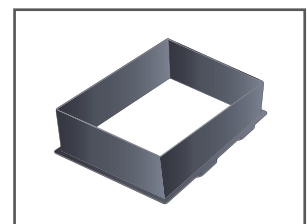
Options



Stainless Steel
Mounting Bracket



Half Glare Shield



Full Glare Shield



Driver and Electrical
Control Gear