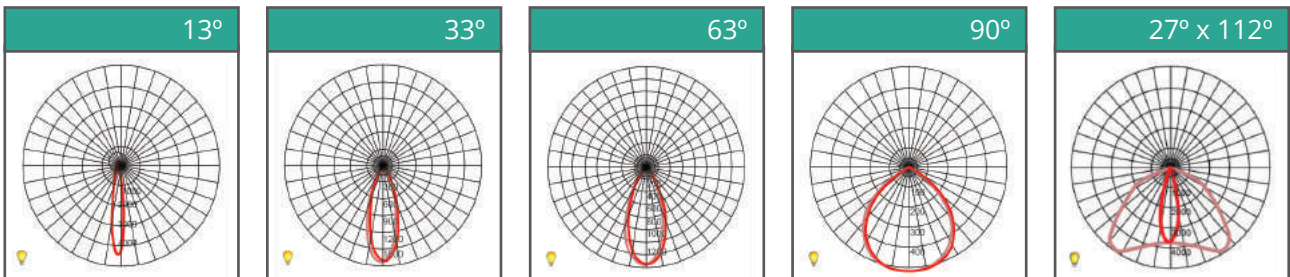
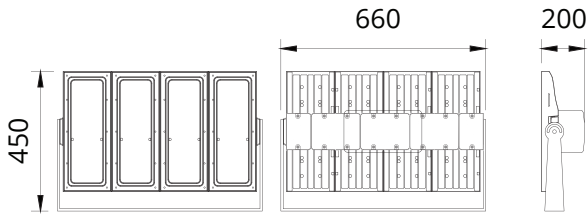




Blazor XSPL400 & XSPL480

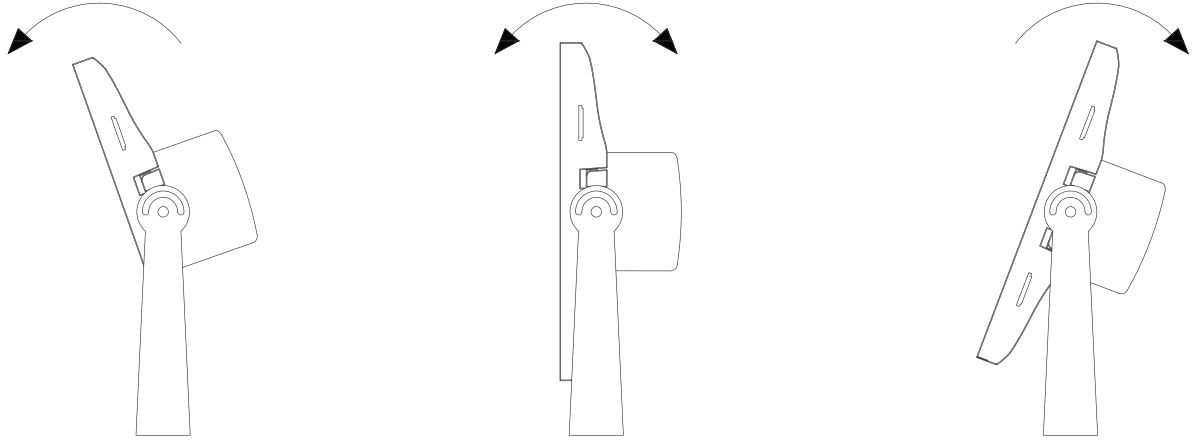
- Lumen Maintenance: L90 @ 70,000 hours
- Working Temperature: -25°C – 50°C
- Storage Temperature: -25°C – 80°C
- Power Factor: >0.95 at Full Load
- THD: <20% at Full Load
- Material: Casting Materials Pressure Casted Aluminum (Powder Coat Finished)



| LED | | | | | | | | |
|---------------------|--------------|----------|----------|----------|--------------|----------|----------|----------|
| Type | | | | | | | | |
| Watts | 400W | | | | 480W | | | |
| CCT | 3500K | 4000K | 5000K | 6000K | 3500K | 4000K | 5000K | 6000K |
| Efficacy | 131 lm/w | 137 lm/w | 139 lm/w | 139 lm/w | 122 lm/w | 126 lm/w | 128 lm/w | 132 lm/w |
| Lumen | 52400 lm | 54800 lm | 55600 lm | 55600 lm | 58560 lm | 60480 lm | 61440 lm | 63360 lm |
| Input Current | 1.73A | | | | 2.08A | | | |
| Ingress Protection | IP66 | | | | IP66 | | | |
| Impact Protection | IK09 | | | | IK09 | | | |
| Weight | 10.5kg | | | | 10.5kg | | | |
| Working Temperature | -25°C ~ 50°C | | | | -25°C ~ 50°C | | | |

Mounting & Construction

Lamp Mounting



Heavy duty, slimline mounting bracket allows for 360 rotation of the lamp. Side locking bolts secure the exact angle.

Pressure Cast Aluminium Casting ADC12
Powder-Coated Finish

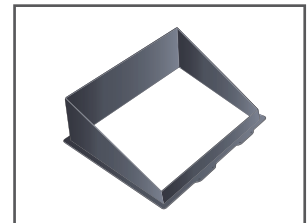


5mm Tempered Glass

Options



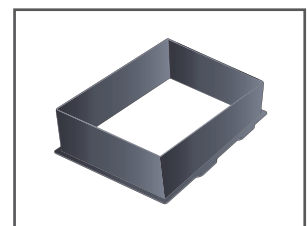
Stainless Steel
Mounting Bracket



Half Glare Shield



Driver and Electrical
Control Gear



Full Glare Shield