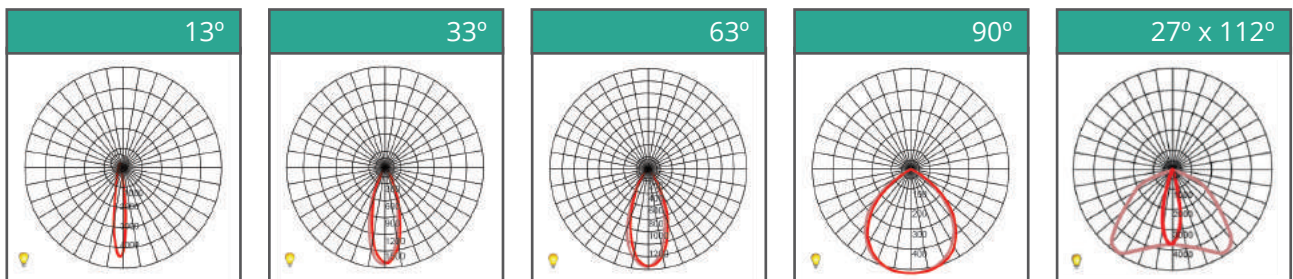


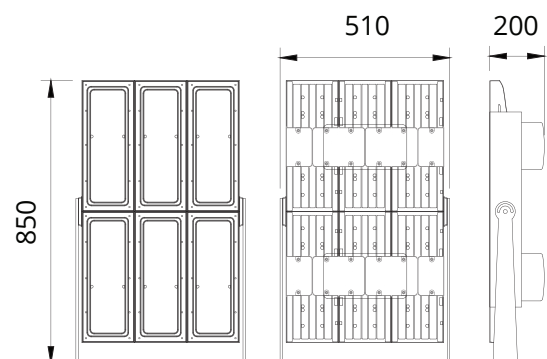


# Blazor XSPL600

- Lumen Maintenance: L90 @ 70,000 hours
- Working Temperature: -25°C – 50°C
- Storage Temperature: -25°C – 80°C
- Power Factor: >0.95 at Full Load
- THD: <20% at Full Load
- Material: Casting Materials Pressure Casted Aluminum (Powder Coat Finished)

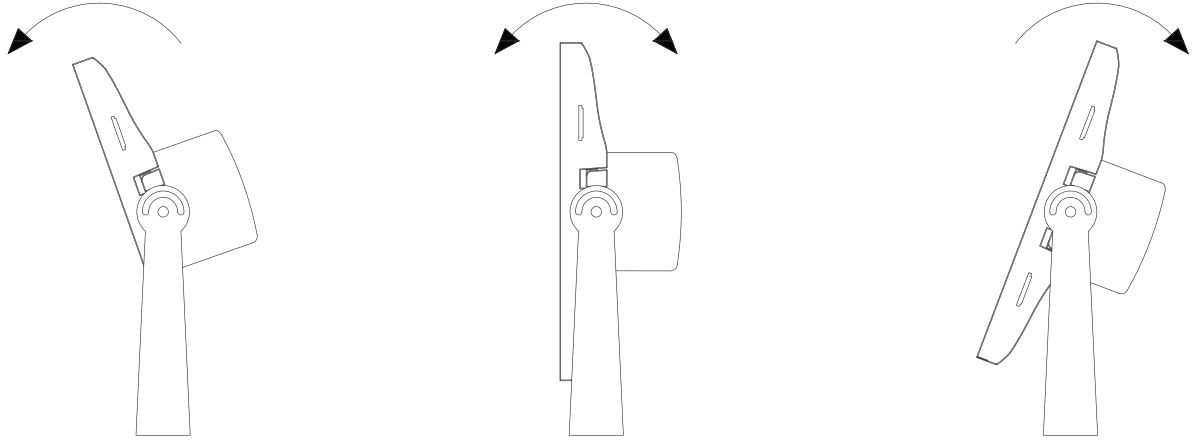


LED				
Type				
Watts	600W			
CCT	3500K	4000K	5000K	6000K
Efficacy	128 lm/w	134 lm/w	136 lm/w	138 lm/w
Lumen	76800 lm	80400 lm	81600 lm	82800 lm
Input Current	2.60A			
Ingress Protection	IP66			
Impact Protection	IK09			
Weight	28kg			
Working Temperature	-25°C – 50°C			



# Mounting & Construction

## Lamp Mounting



Heavy duty, slimline mounting bracket allows for 360 rotation of the lamp. Side locking bolts secure the exact angle.

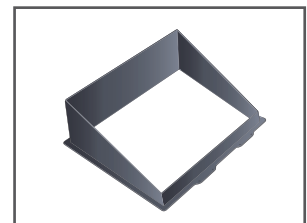
Pressure Cast Aluminium Casting ADC12  
Powder-Coated Finish



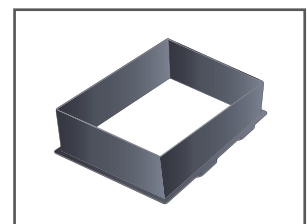
### Options



Stainless Steel  
Mounting Bracket



Half Glare Shield



Full Glare Shield



Driver and Electrical  
Control Gear