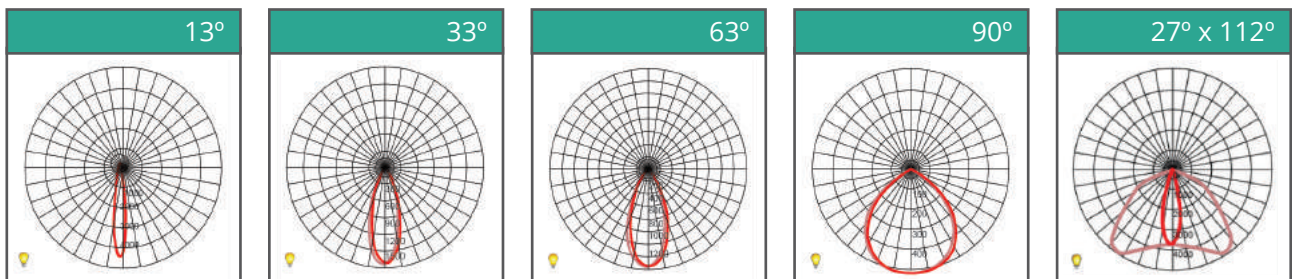
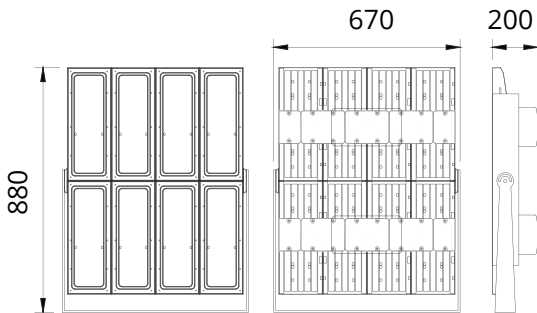




Blazor XSPL800 & XSPL960

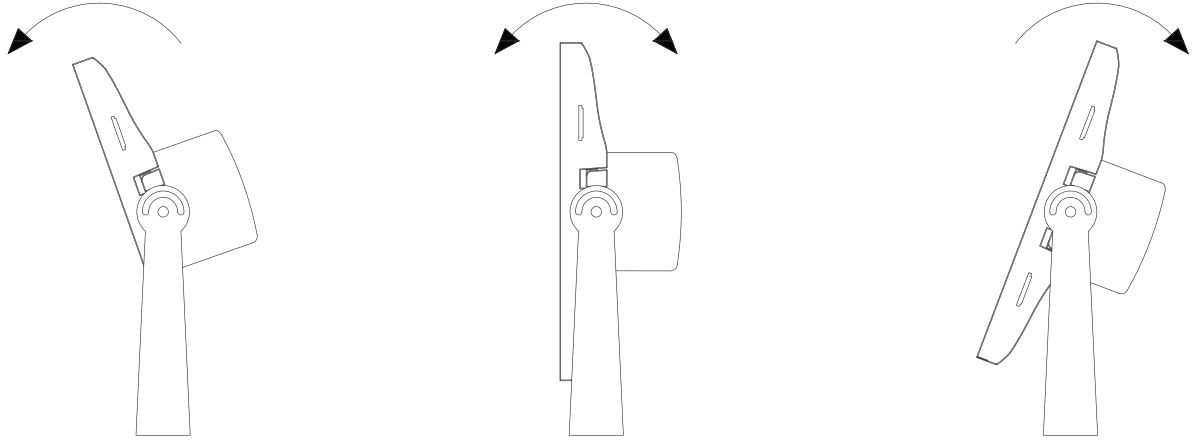
- Lumen Maintenance: L90 @ 70,000 hours
- Working Temperature: -25°C – 50°C
- Storage Temperature: -25°C – 80°C
- Power Factor: >0.95 at Full Load
- THD: <20% at Full Load
- Material: Casting Materials Pressure Casted Aluminum (Powder Coat Finished)



LED								
Type								
Watts	800W				960W			
CCT	3500K	4000K	5000K	6000K	3500K	4000K	5000K	6000K
Efficacy	125 lm/w	131 lm/w	133 lm/w	138 lm/w	115 lm/w	121 lm/w	123 lm/w	123 lm/w
Lumen	100000 lm	104800 lm	106400lm	110400 lm	110400 lm	116160 lm	118080 lm	118080 lm
Input Current	3.47A				4.17A			
Ingress Protection	IP66				IP66			
Impact Protection	IK09				IK09			
Weight	34kg				134kg			
Working Temperature	-25°C ~ 50°C				-25°C ~ 50°C			

Mounting & Construction

Lamp Mounting



Heavy duty, slimline mounting bracket allows for 360 rotation of the lamp. Side locking bolts secure the exact angle.

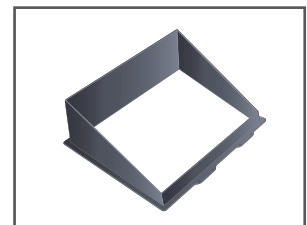
Pressure Cast Aluminium Casting ADC12
Powder-Coated Finish



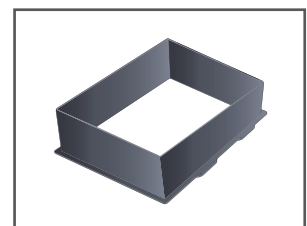
Options



Stainless Steel
Mounting Bracket



Half Glare Shield



Full Glare Shield



Driver and Electrical
Control Gear