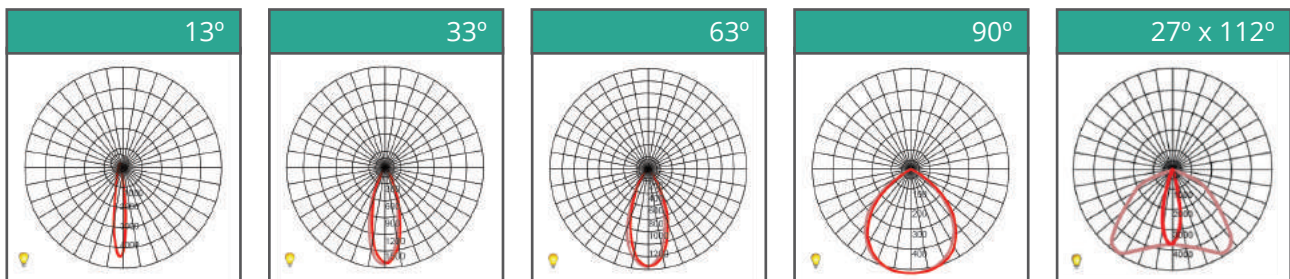
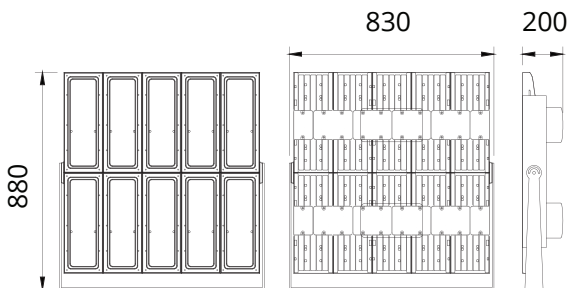




Blazor XSPL1000 & XSPL1200

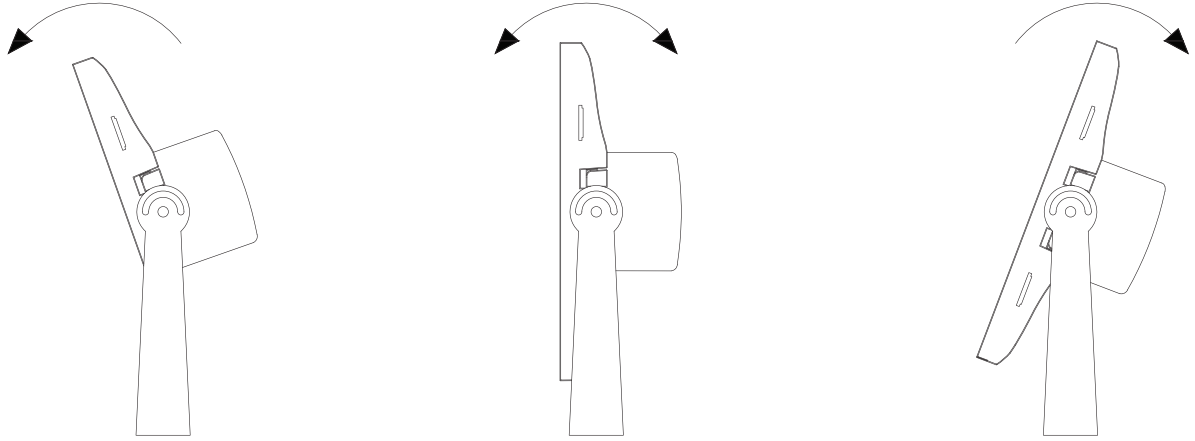
- Lumen Maintenance: L90 @ 70,000 hours
- Working Temperature: -25°C – 50°C
- Storage Temperature: -25°C – 80°C
- Power Factor: >0.95 at Full Load
- THD: <20% at Full Load
- Material: Casting Materials Pressure Casted Aluminum (Powder Coat Finished)



LED								
Type								
Watts	1000W				1200W			
CCT	3500K	4000K	5000K	6000K	3500K	4000K	5000K	6000K
Efficacy	133 lm/w	137 lm/w	137 lm/w	136 lm/w	129 lm/w	133 lm/w	133 lm/w	132 lm/w
Lumen	133247 lm	137362 lm	137129 lm	136083 lm	155398 lm	160199 lm	159856 lm	158636 lm
Input Current	4.35A				5.21A			
Ingress Protection	IP66				IP66			
Impact Protection	IK09				IK09			
Weight	72kg				72kg			
Working Temperature	-25°C ~ 50°C				-25°C ~ 50°C			

Mounting & Construction

Lamp Mounting



Heavy duty, slimline mounting bracket allows for 360 rotation of the lamp. Side locking bolts secure the exact angle.

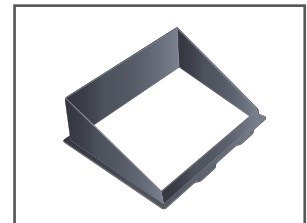
Pressure Cast Aluminium Casting ADC12
Powder-Coated Finish



Options



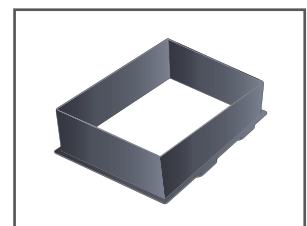
Stainless Steel Mounting Bracket



Half Glare Shield



Driver and Electrical Control Gear



Full Glare Shield