



Lighting Design Mining Village

SAMPLE

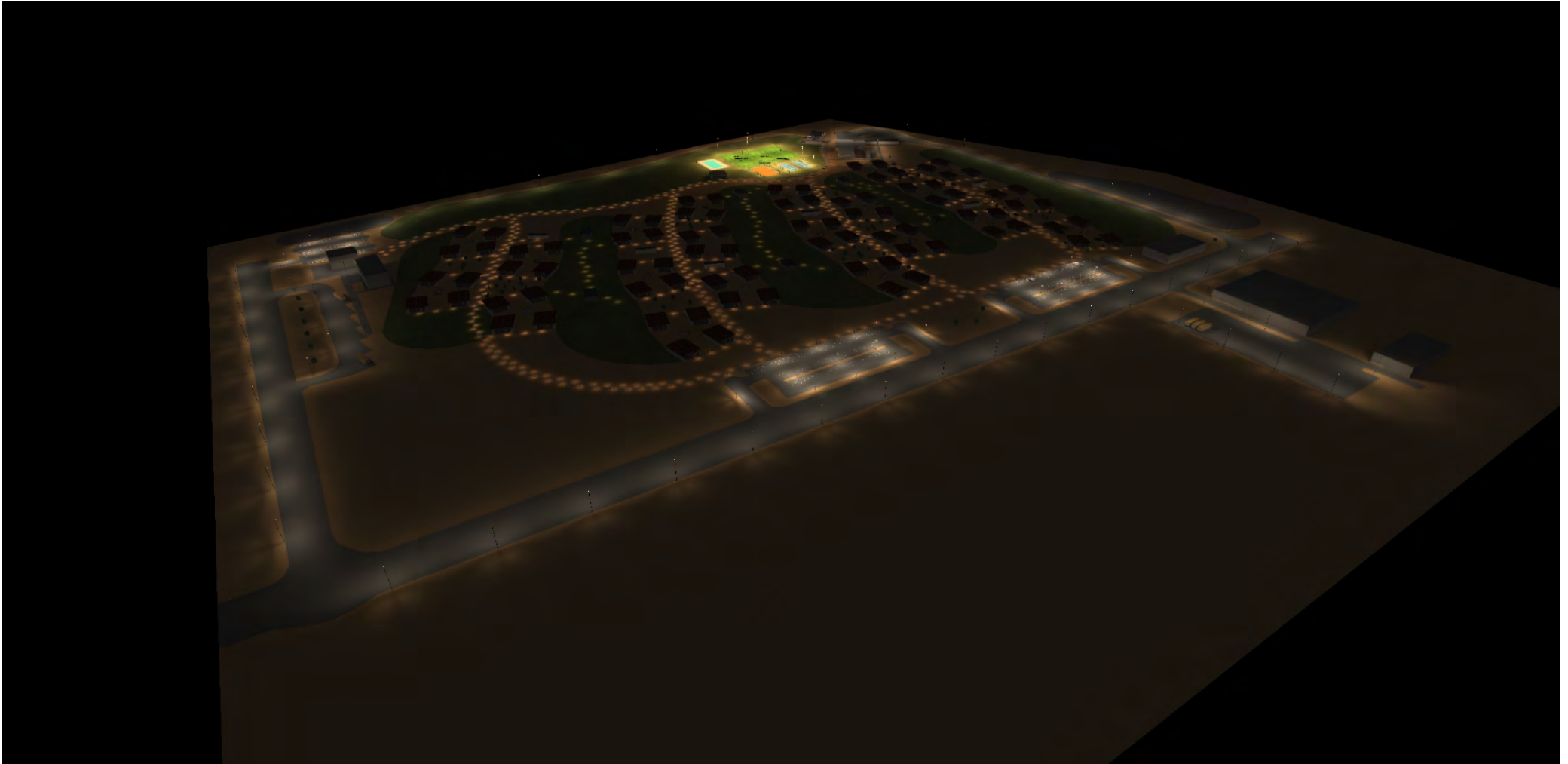


Luminaire list

Φ_{total} 4566028 lm	P_{total} 42744.2 W	Luminous efficacy 106.8 lm/W
------------------------------	--------------------------	---------------------------------

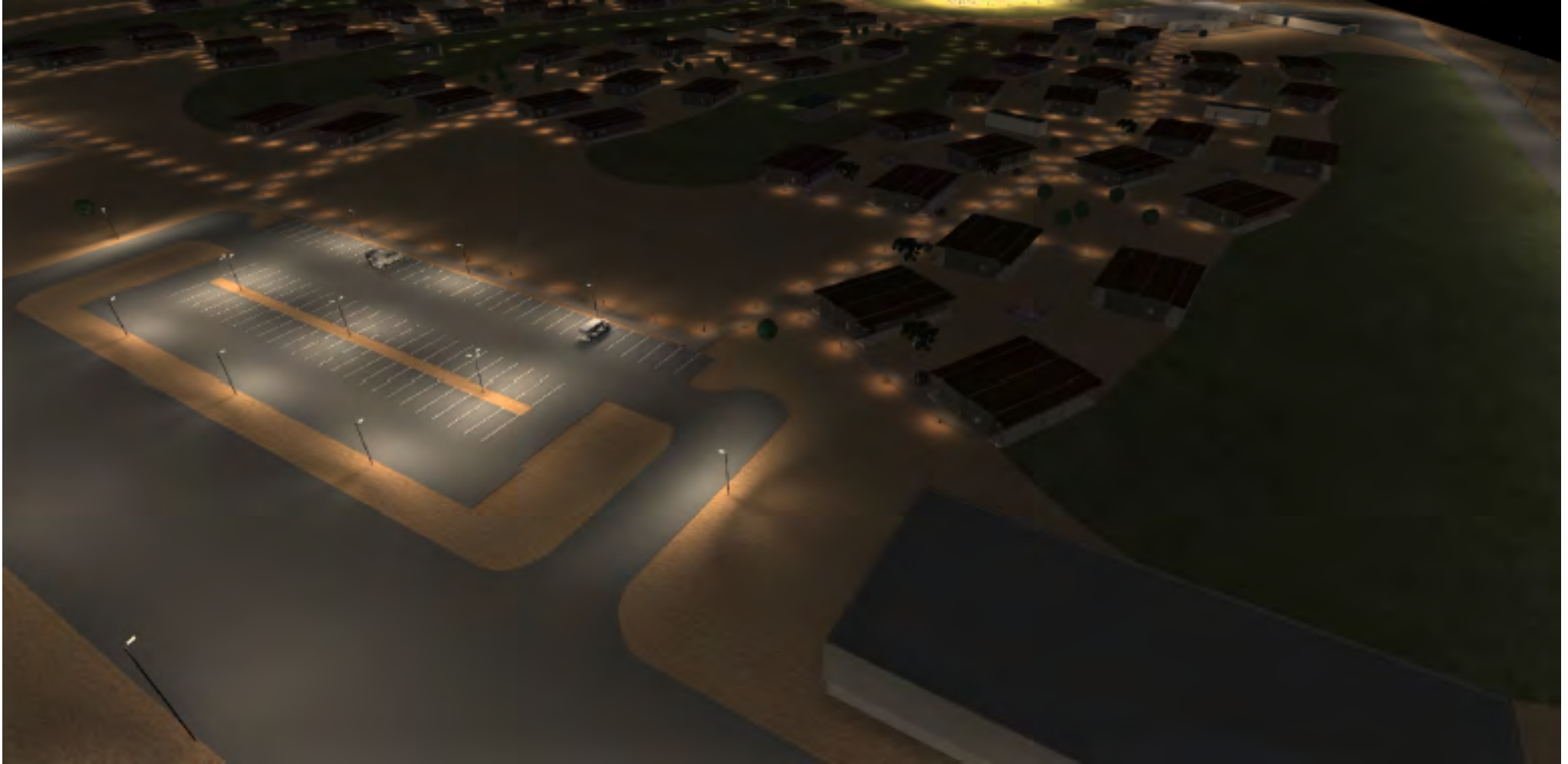
pcs.	Manufacturer	Article Name	P	Φ	Luminous efficacy
120	Vizona	Zavia ST 100W (Type II-S)	100.0 W	13998 lm	140.0 lm/W
6	Vizona	Challenger Pro 1800W TP2	1798.8 W	253794 lm	141.1 lm/W
6	Vizona	Challenger Pro 1000W TP2	1000.5 W	135721 lm	135.7 lm/W
4	Vizona	Challenger Pro 500W TP2	502.1 W	68341 lm	136.1 lm/W
597	Vizona	Astro Bollard	20.0 W	462 lm	23.1 lm/W





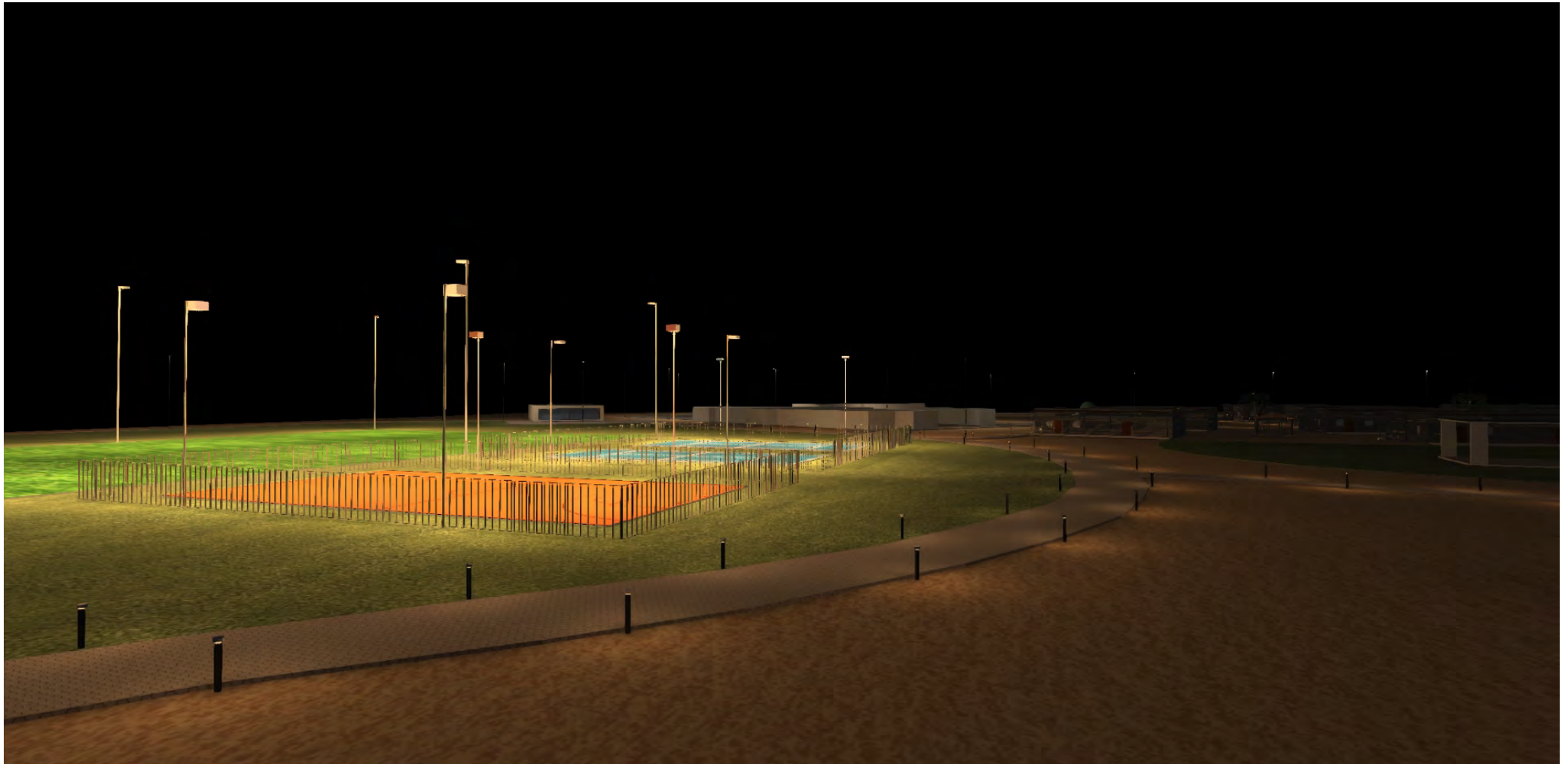
Camp Lighting

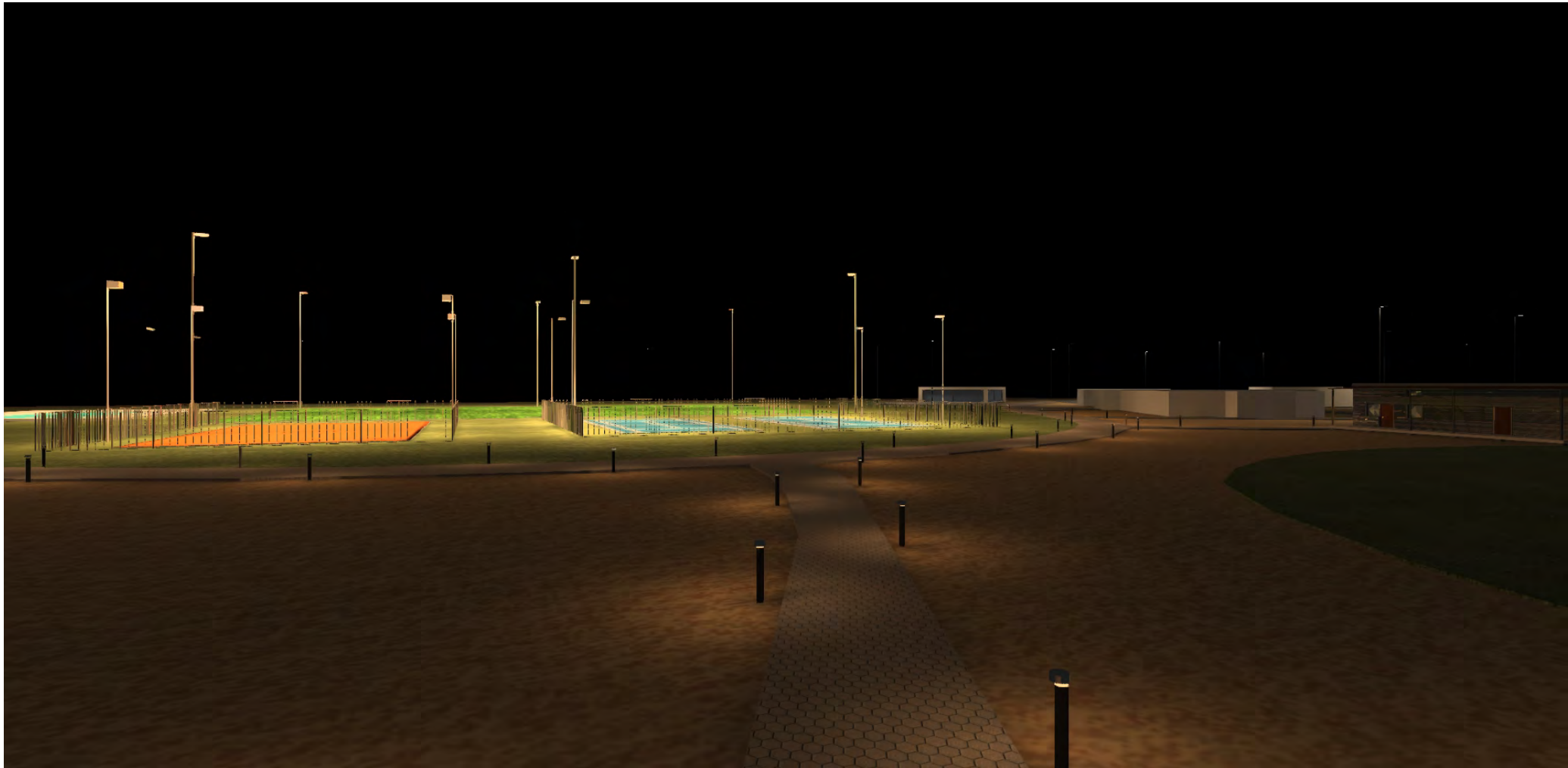
Images



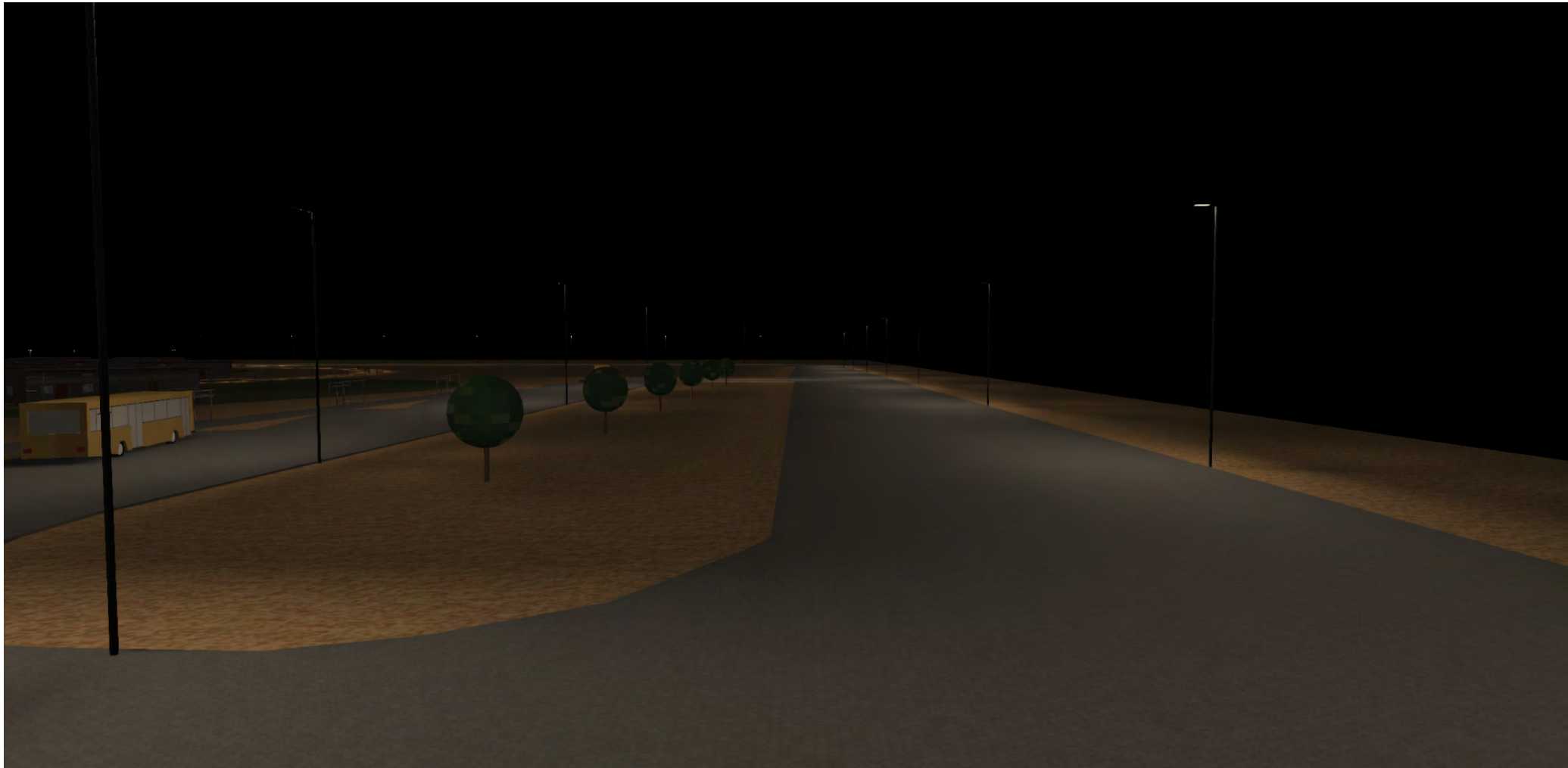


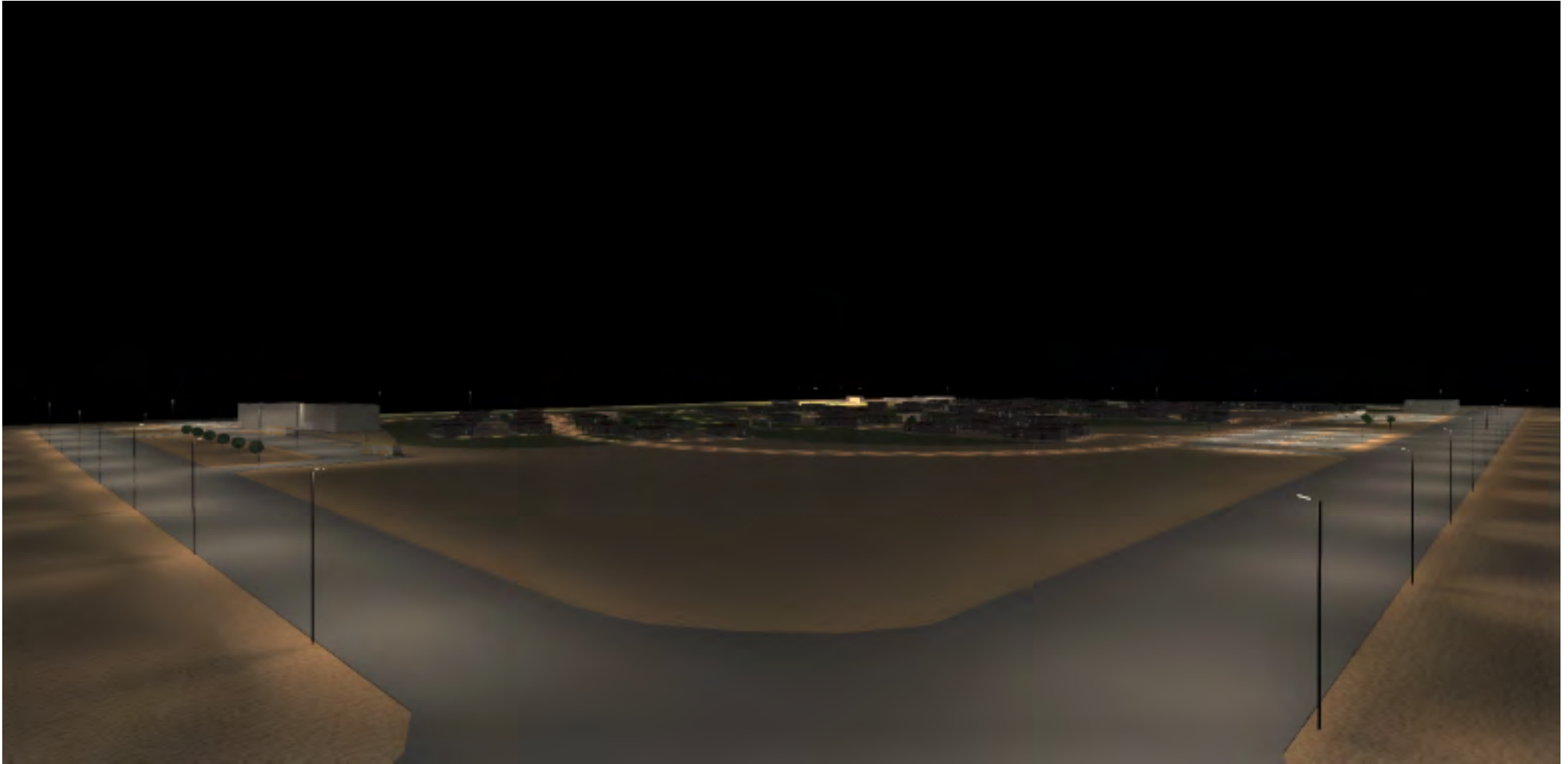






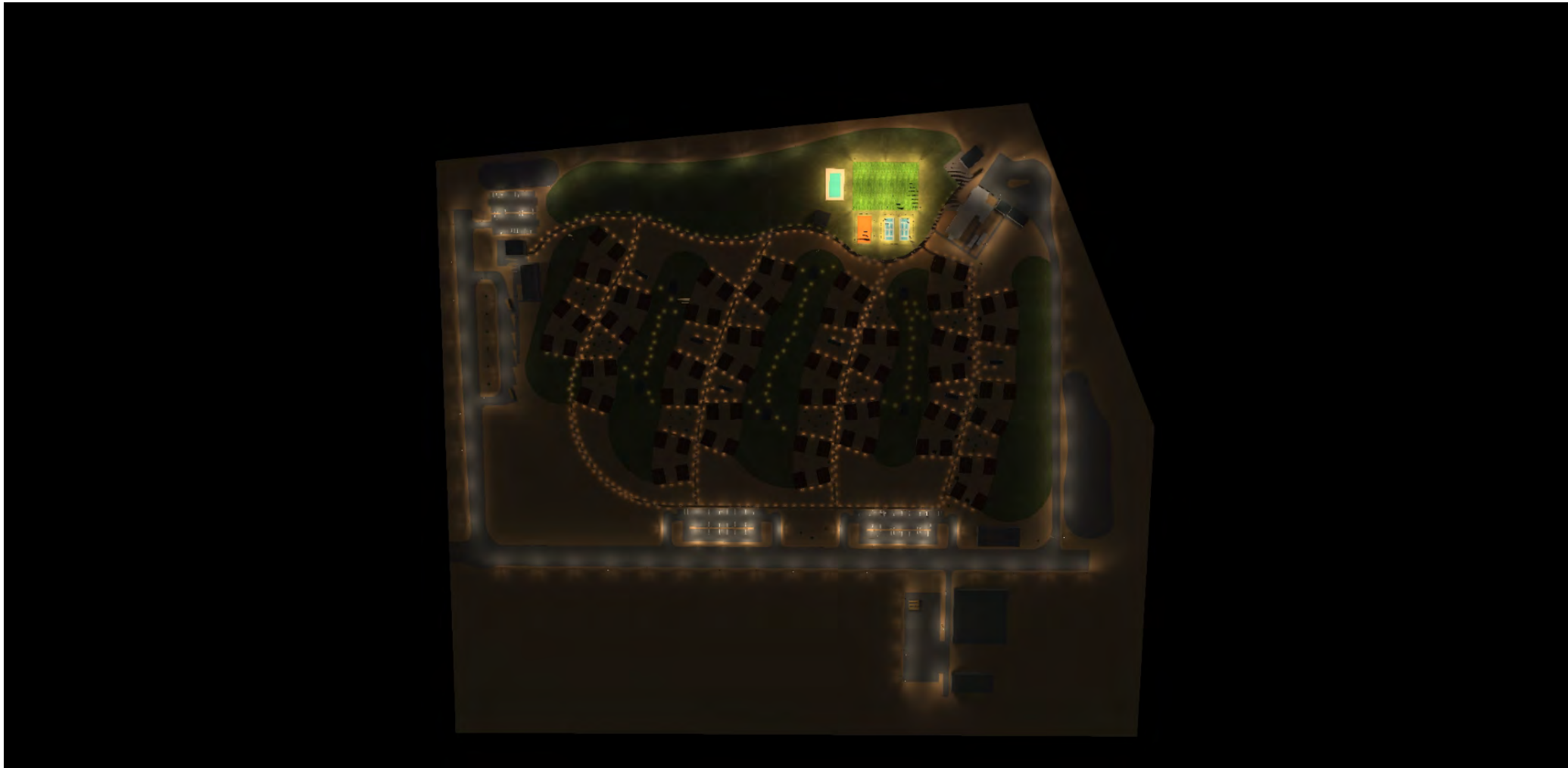


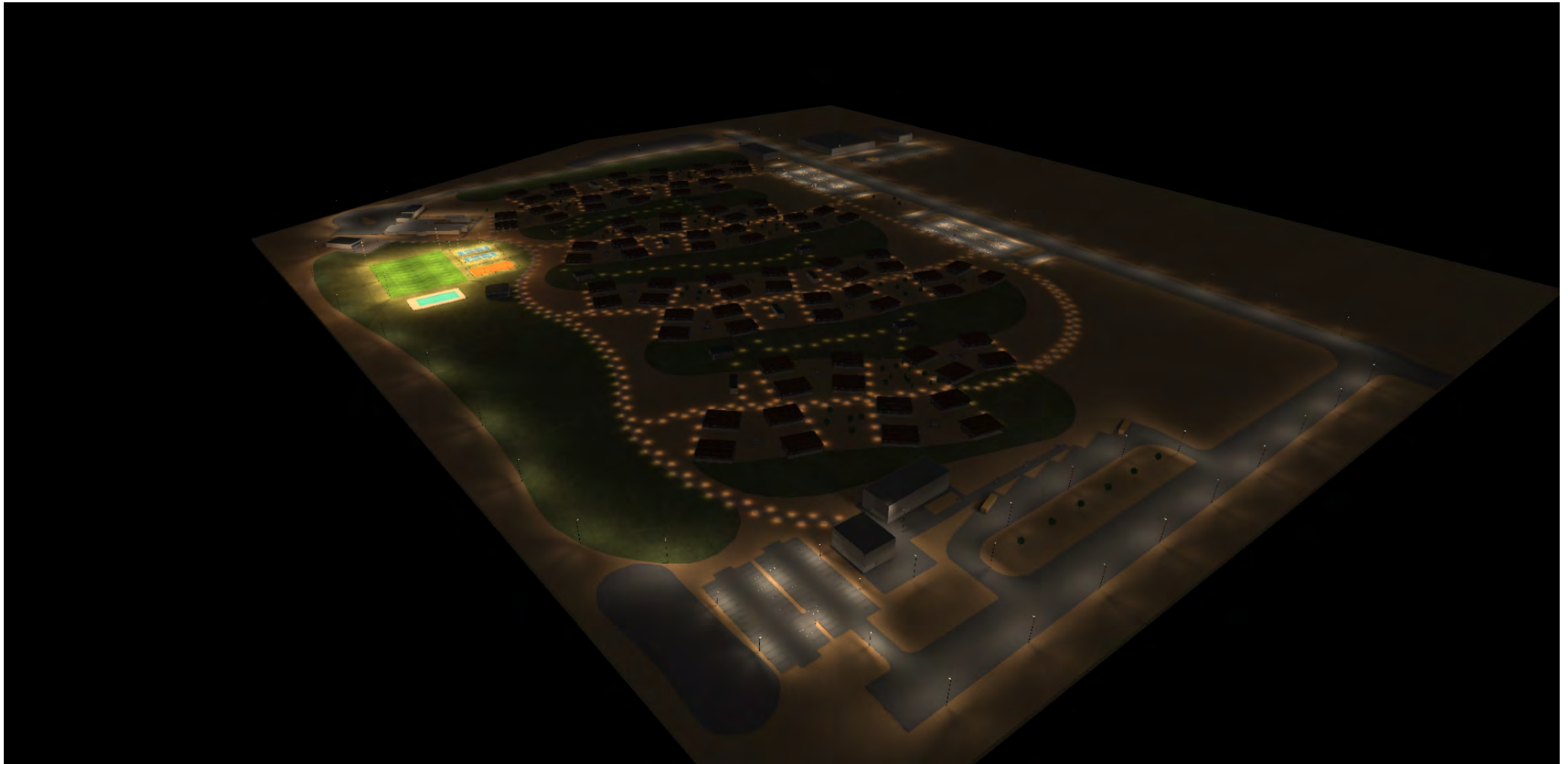


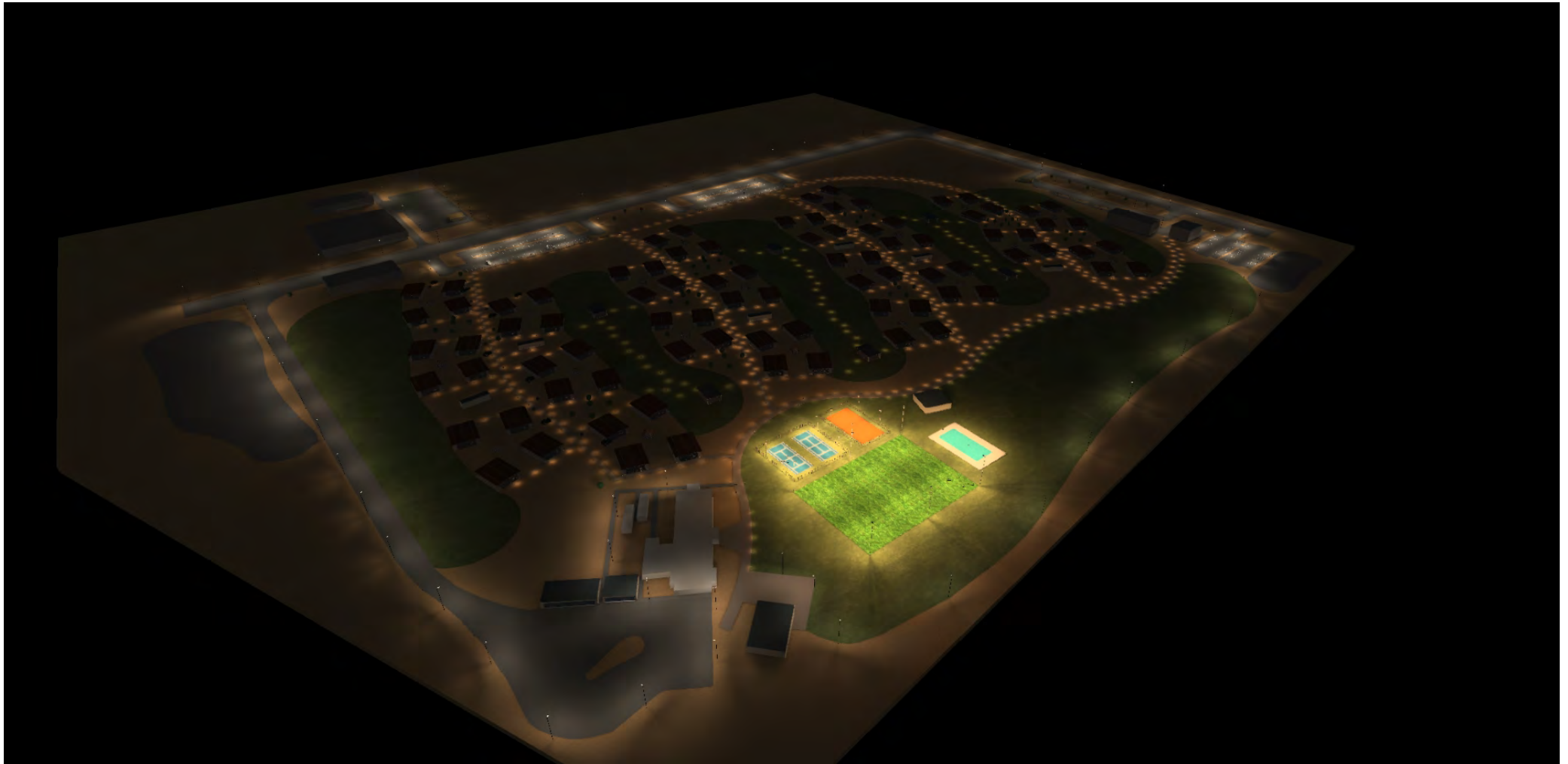




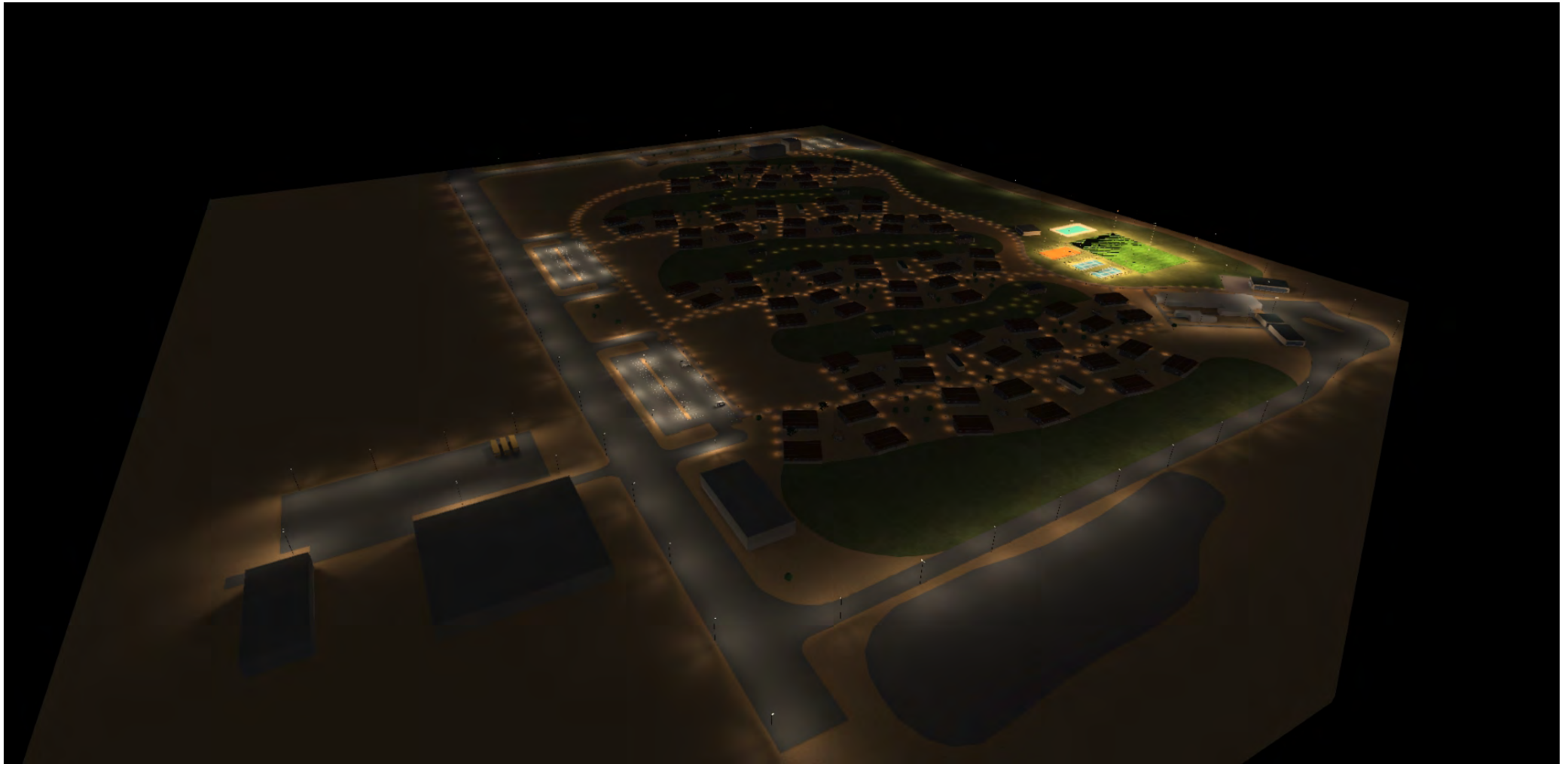




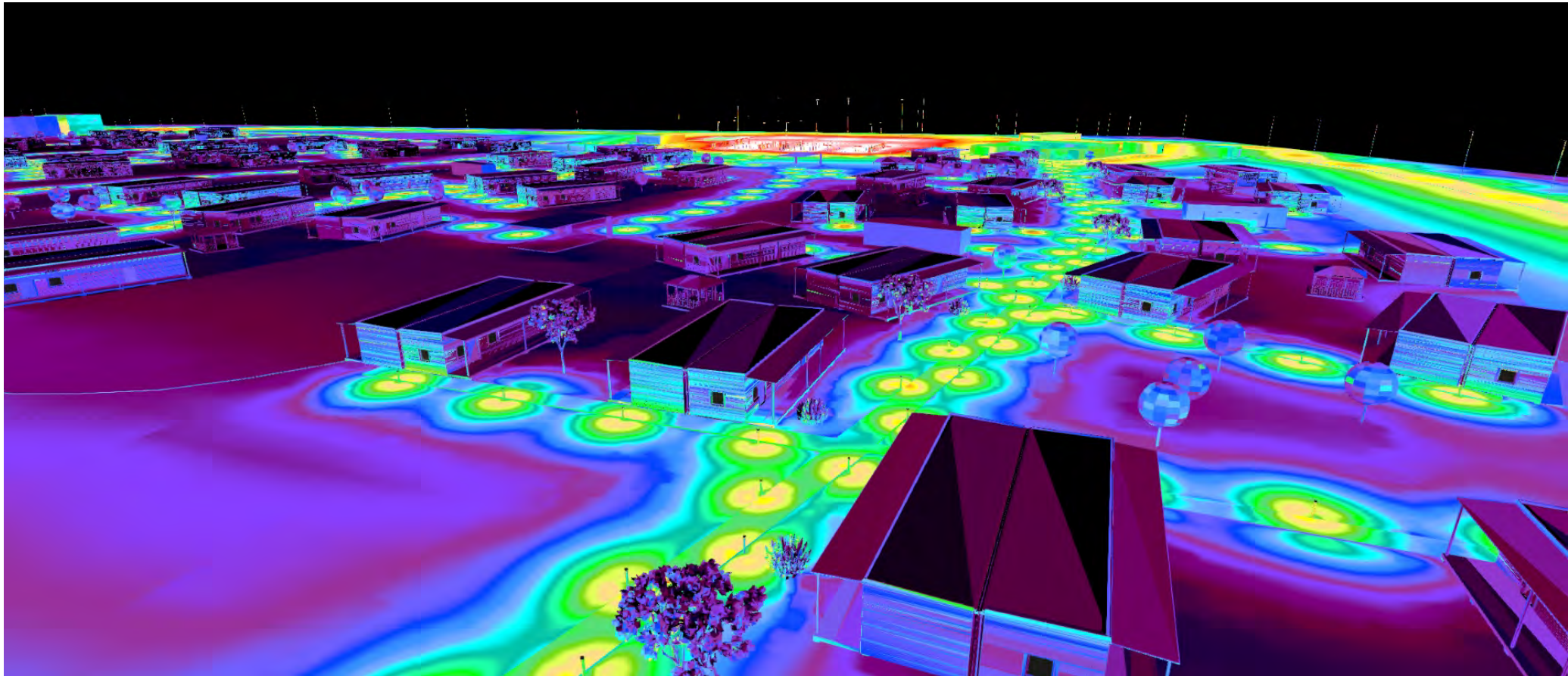


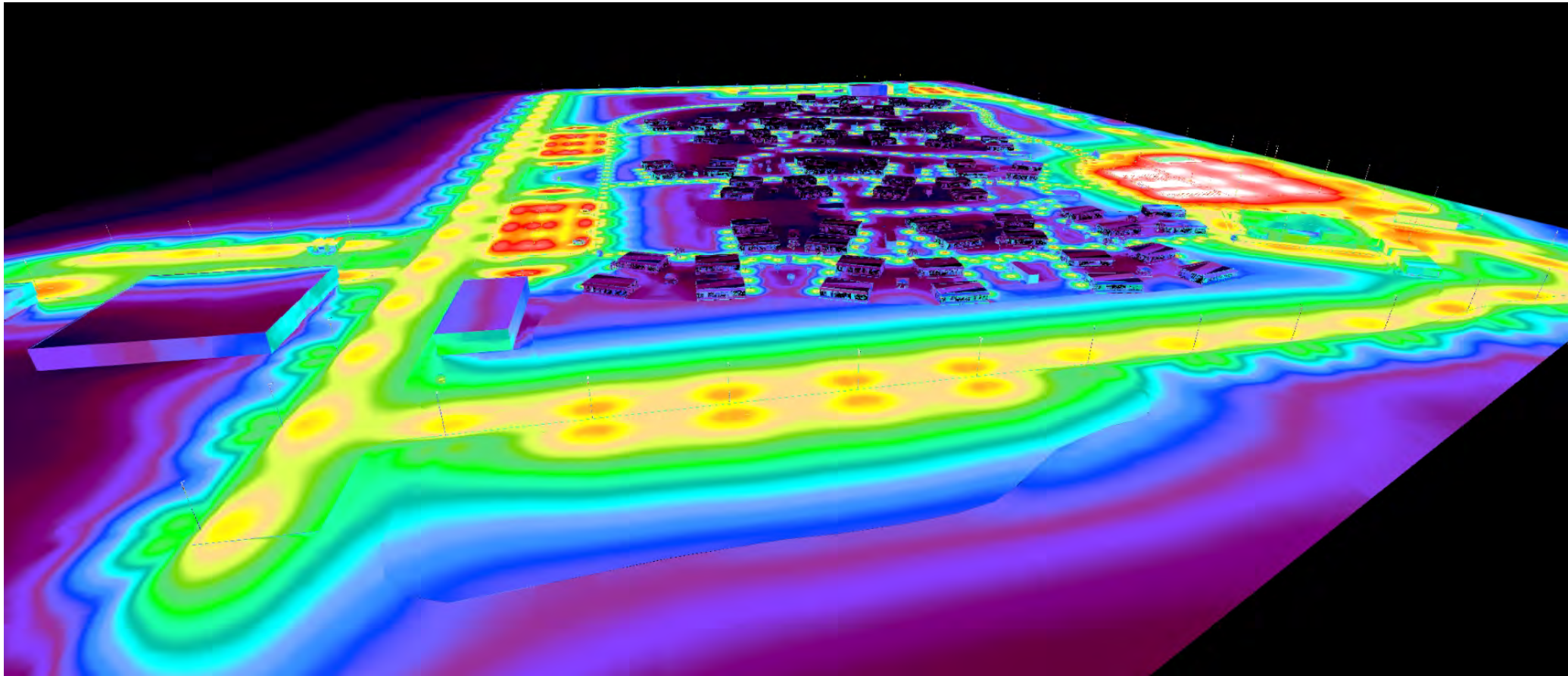


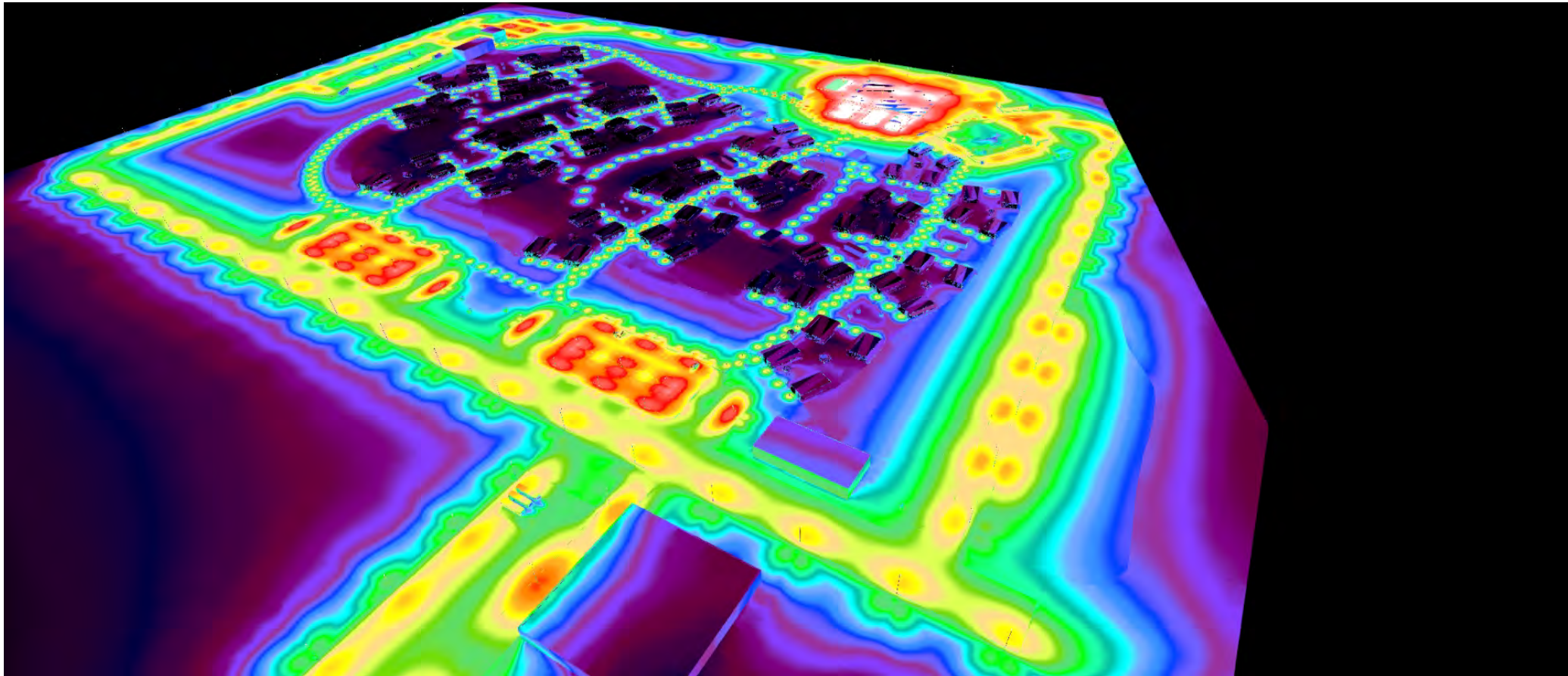


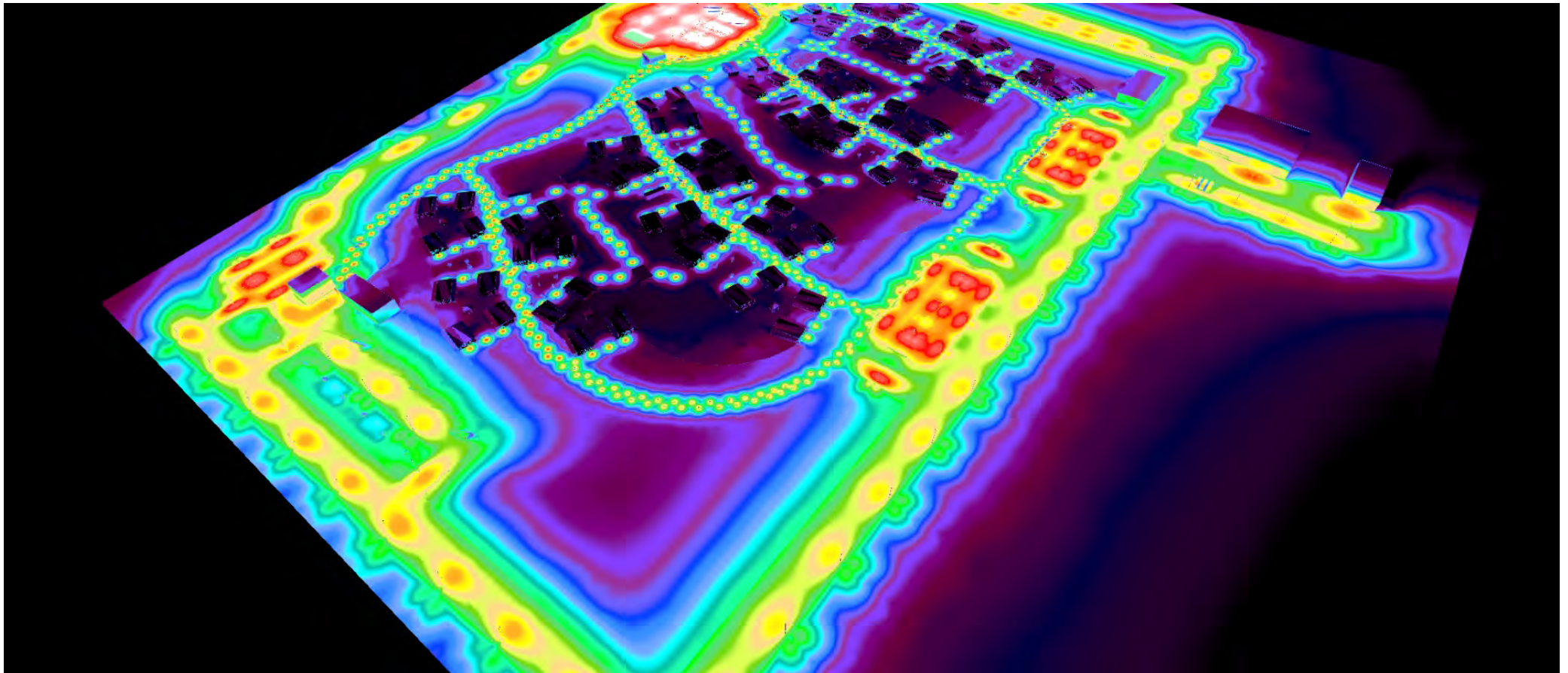


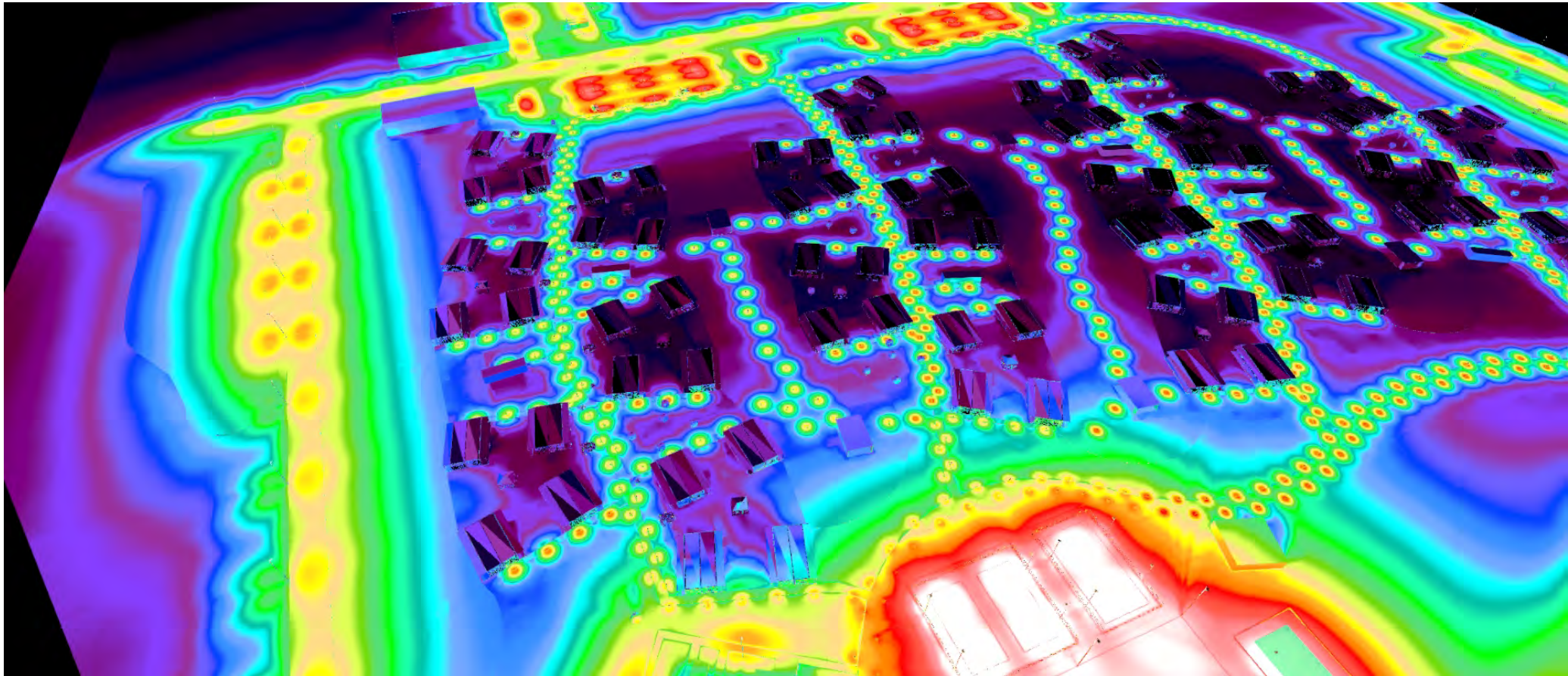
Images











(Light scene 1)

Calculation objects



Calculation Objects

Light Scene 1

Calculation planes

Characteristics	\bar{E}	E_{min}	E_{max}	g_1	g_2	Index
ZONE-ROAD Perpendicular Illuminance (adaptive) Height: 0.750 m	10.3 lx	3.65 lx	22.7 lx	0.35	0.16	CG1
ZONE-CARPARK Perpendicular illuminance (adaptive) Height:0.750 m	41.0 lx	15.4 lx	162 lx	0.38	0.095	CG2
ZONE-BUS SHELTER Perpendicular Illuminance (adaptive) Height:0.750 m	12.9 lx	6.77 lx	22.6 lx	0.52	0.30	CG3
ZONE-CENTRAL PATH Perpendicular Illuminance (adaptive) Height:0.200 m	7.16 lx	0.85 lx	34.1 lx	0.12	0.025	CG4
basketball Perpendicular Illuminance (adaptive) Height:: 1.000 m	242 lx	132 lx	384 lx	0.54	0.38	CG5
Tennis 1 Perpendicular Illuminance (adaptive) Height:1.000 m	325 lx	135 lx	548 lx	0.41	0.27	CG6
Tennis 2 Perpendicular Illuminance (adaptive) Height:1.000 m	312 lx	120 lx	566 lx	0.38	0.23	CG7
Touch Football Perpendicular Illuminance (adaptive) Height:1.000 m	224 lx	107 lx	340 lx	0.48	0.31	CG8